
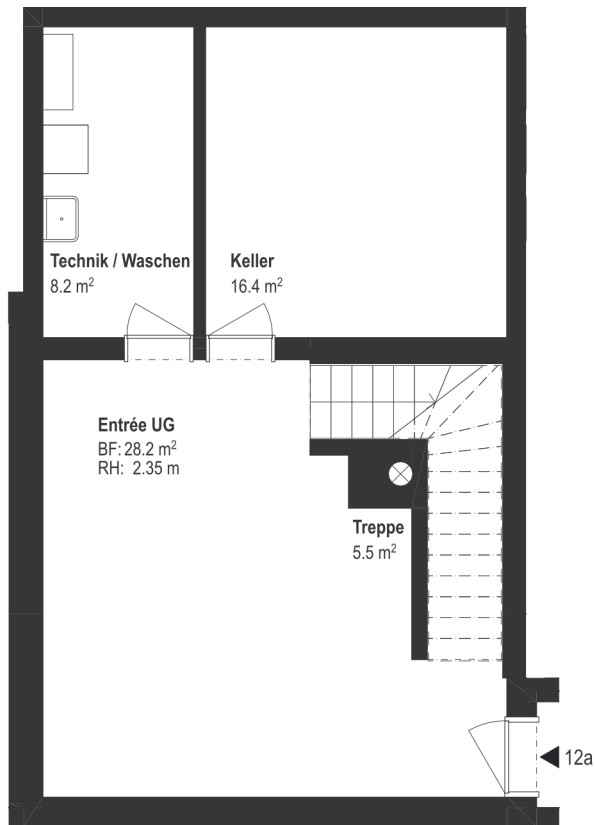


Strubenacher

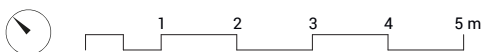
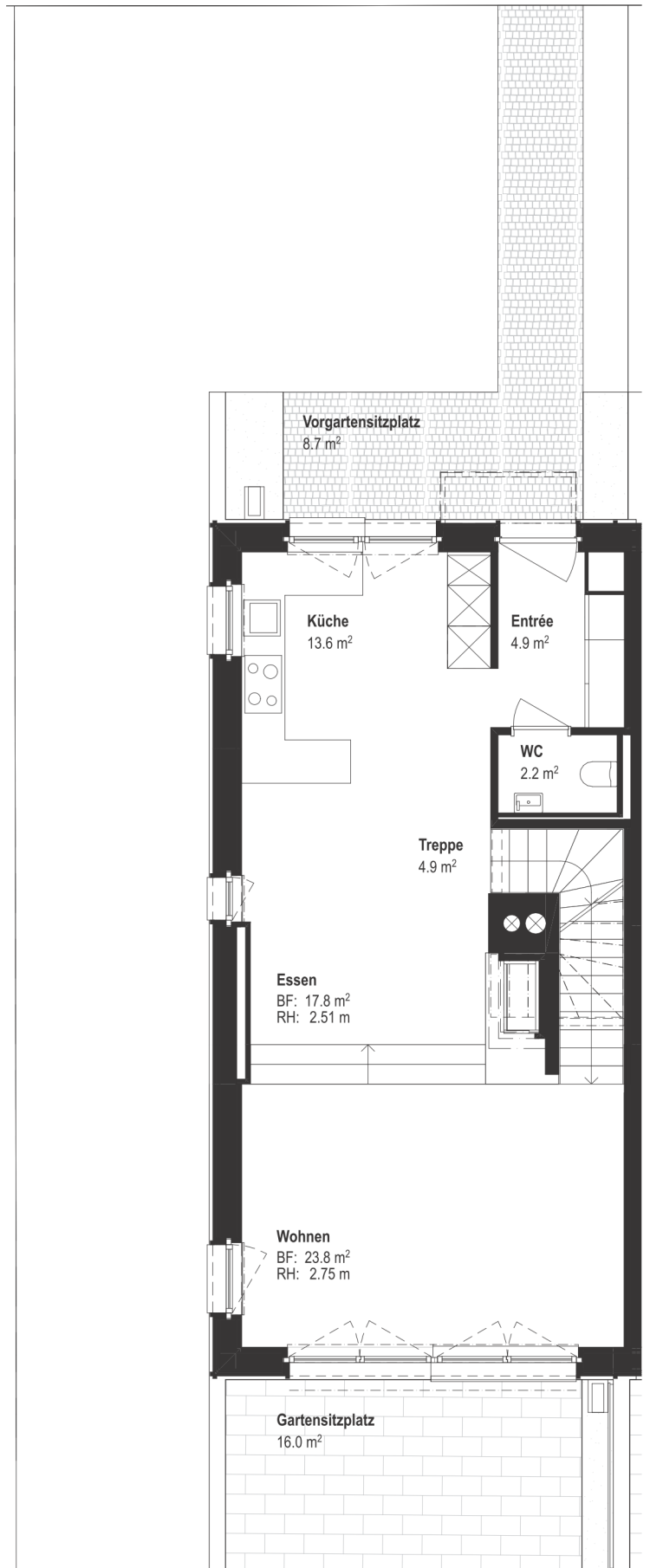


| | |
|---------------------------|---|
| Reiheneinfamilienhaus 12a | 5.5 Zimmer |
| Parzellenfläche | ca. 252 m ² |
| Beheizte Wohnfläche | ca. 213 m ² |
| Oberirdische Wohnfläche | ca. 179 m ² |
| Nicht tragende Wand |  |

Untergeschoss

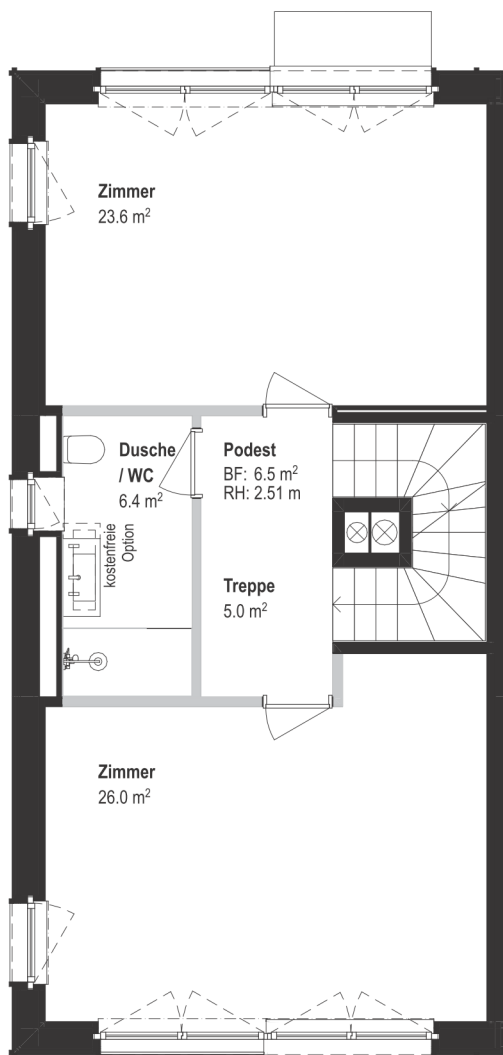


Erdgeschoss

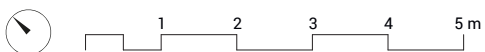
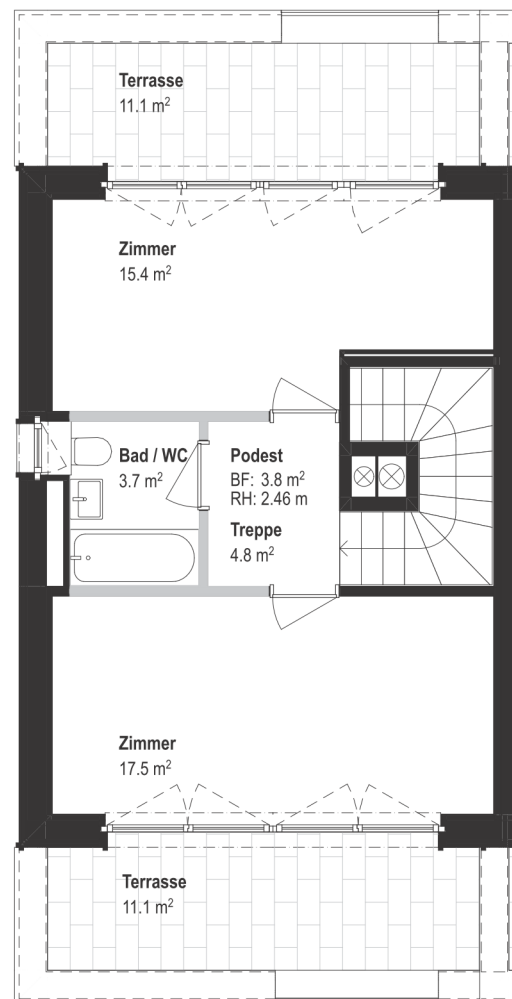


Massstab 1:100 (Format A4)

1. Obergeschoss



2. Obergeschoss



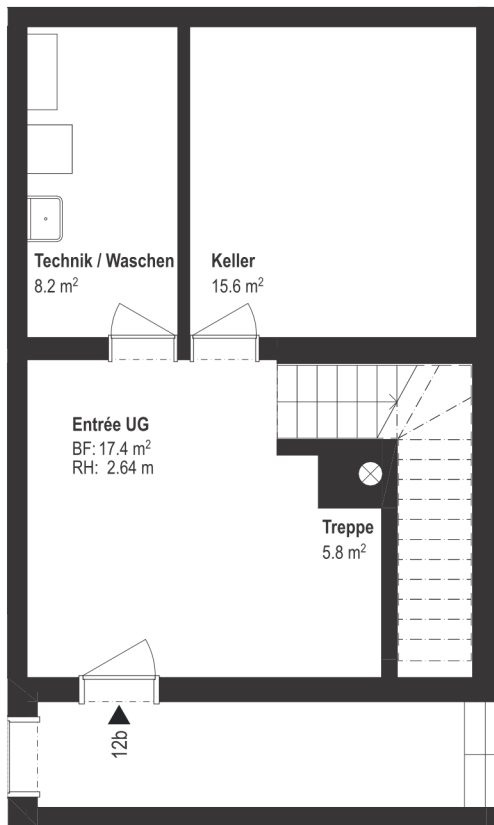
Massstab 1:100 (Format A4)

Strubenacher

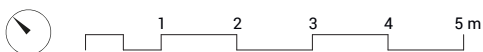
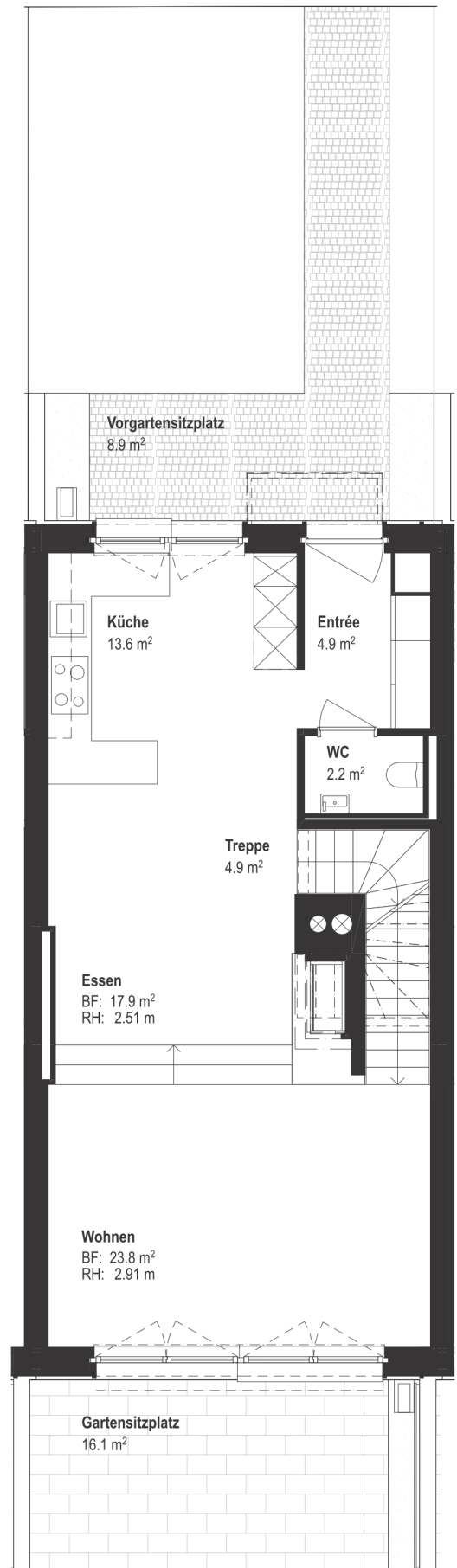


| | |
|---------------------------|------------------------|
| Reiheneinfamilienhaus 12b | 5.5 Zimmer |
| Parzellenfläche | ca. 170 m ² |
| Beheizte Wohnfläche | ca. 203 m ² |
| Oberirdische Wohnfläche | ca. 180 m ² |
| Nicht tragende Wand | ■ |

Untergeschoss

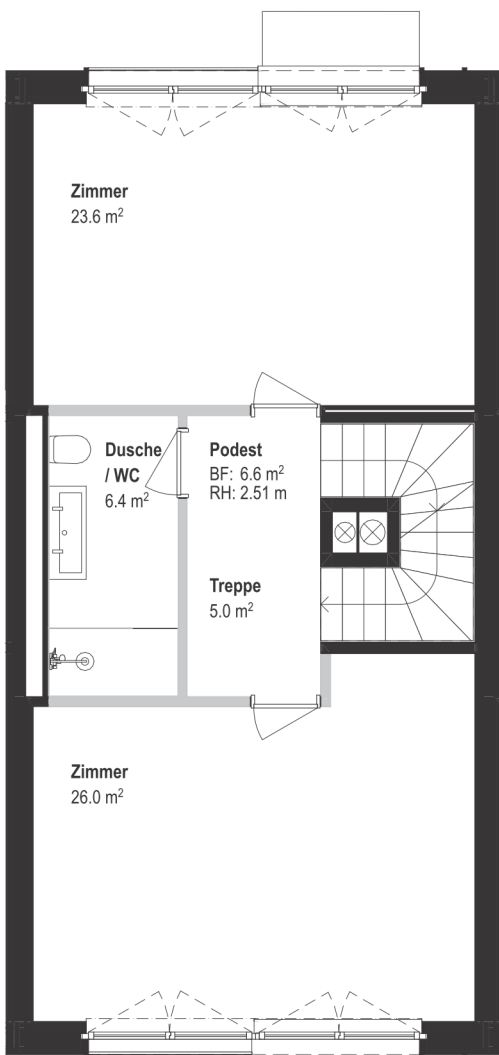


Erdgeschoss

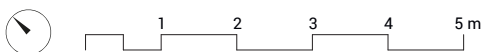
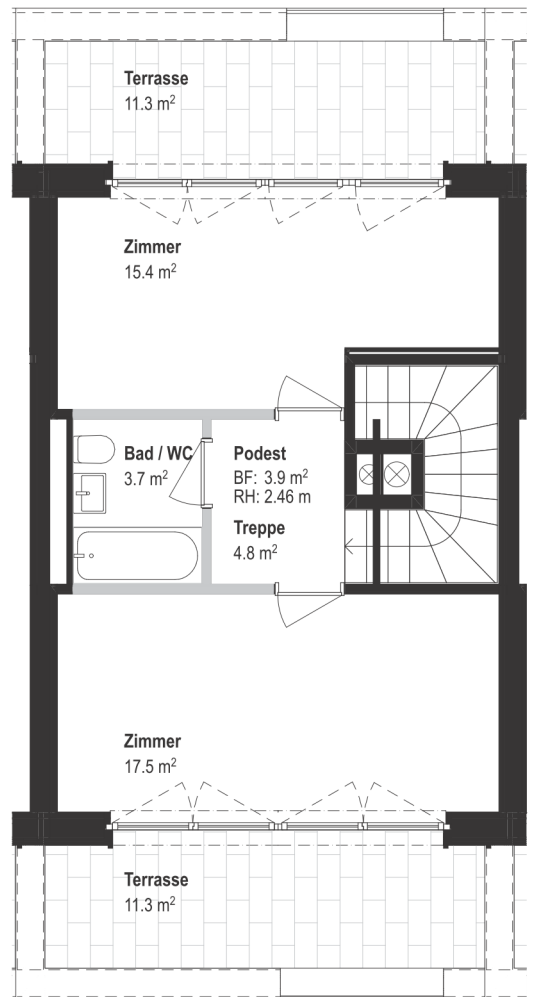


Massstab 1:100 (Format A4)

1. Obergeschoss



2. Obergeschoss



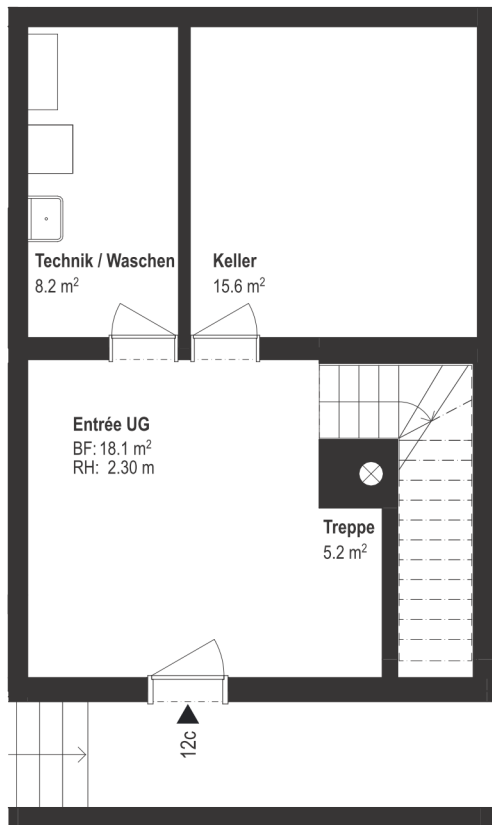
Massstab 1:100 (Format A4)

Strubenacher

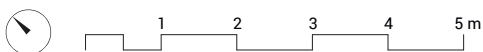
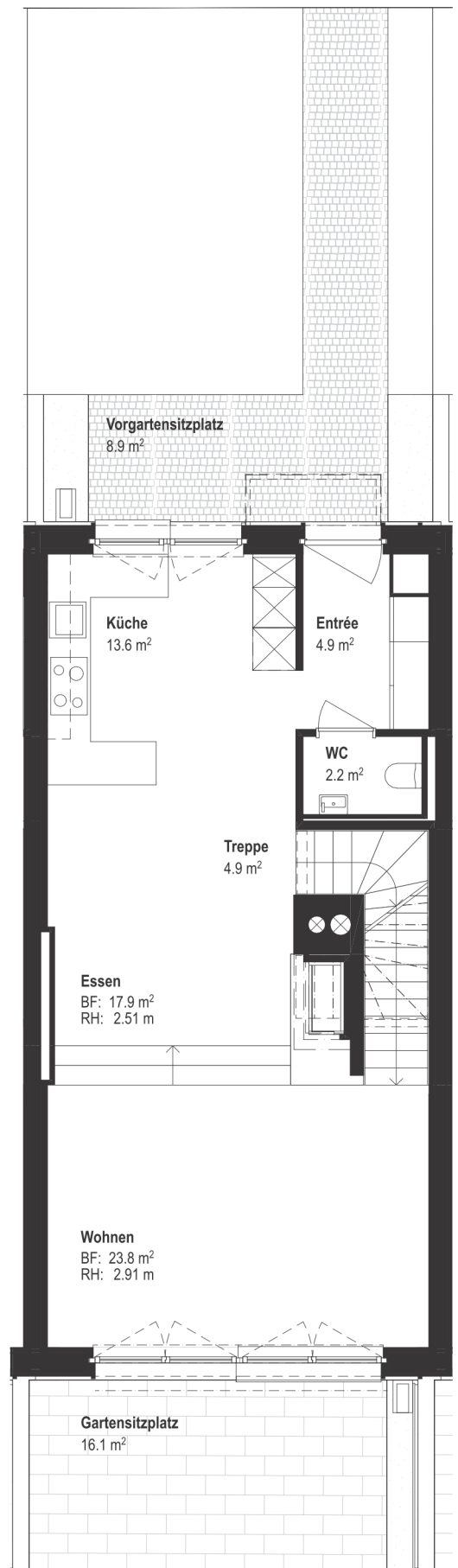


| | |
|---------------------------|------------------------|
| Reiheneinfamilienhaus 12c | 5.5 Zimmer |
| Parzellenfläche | ca. 177 m ² |
| Beheizte Wohnfläche | ca. 203 m ² |
| Oberirdische Wohnfläche | ca. 180 m ² |
| Nicht tragende Wand | ■ |

Untergeschoss

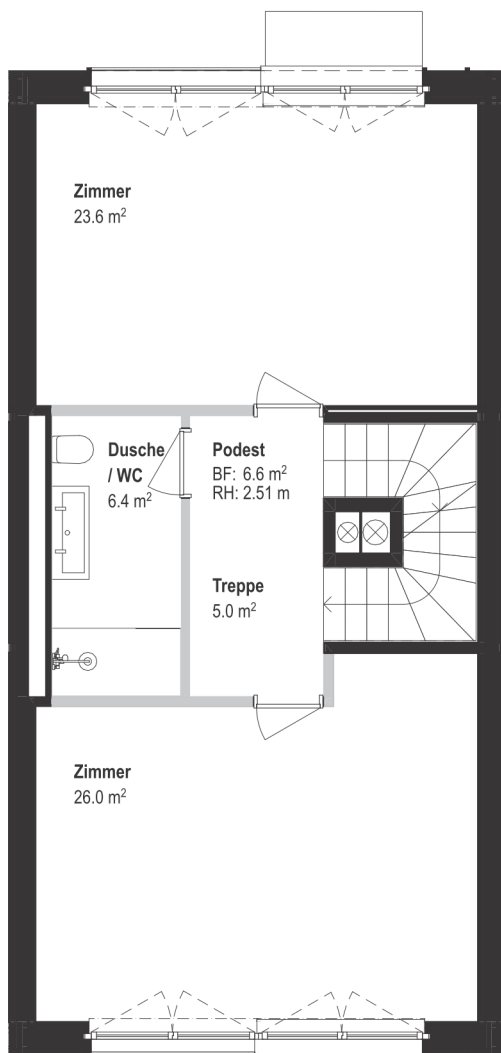


Erdgeschoss

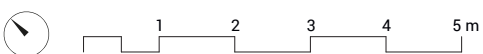
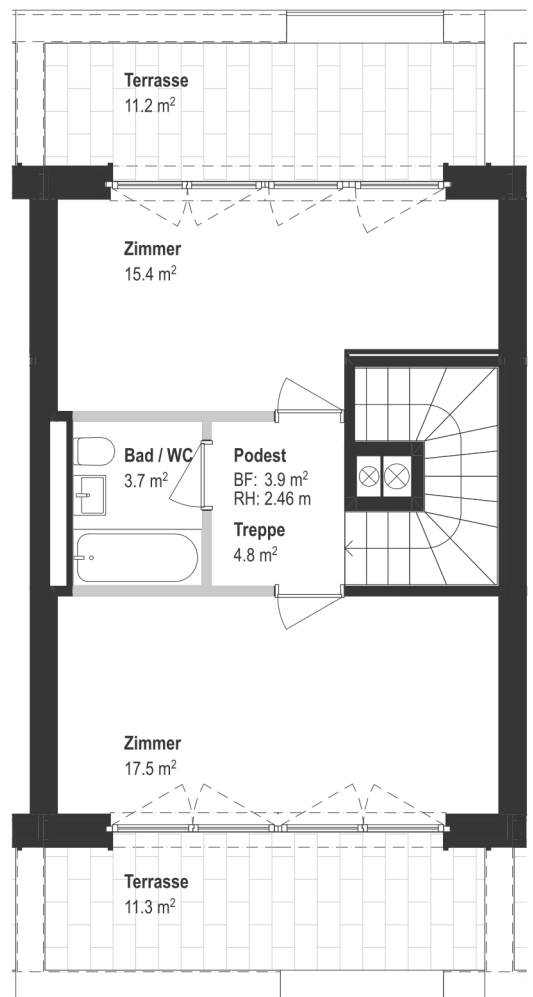


Massstab 1:100 (Format A4)

1. Obergeschoss



2. Obergeschoss



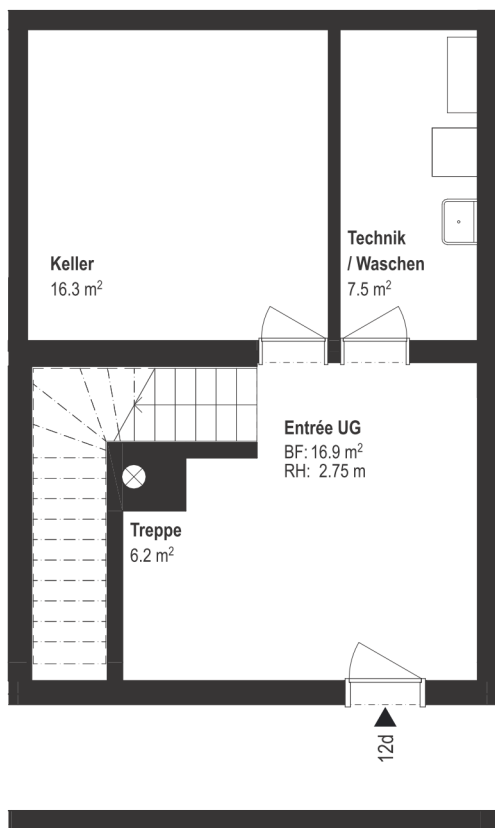
Massstab 1:100 (Format A4)

Strubenacher

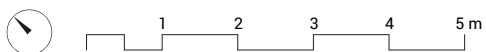
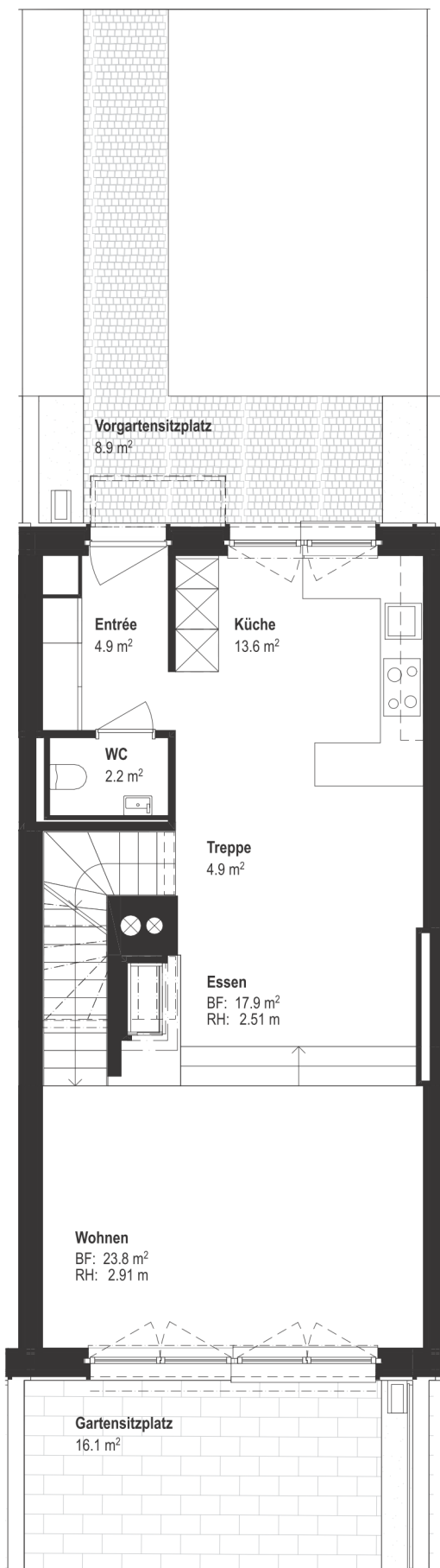


| | |
|---------------------------|------------------------|
| Reiheneinfamilienhaus 12d | 5.5 Zimmer |
| Parzellenfläche | ca. 184 m ² |
| Beheizte Wohnfläche | ca. 203 m ² |
| Oberirdische Wohnfläche | ca. 180 m ² |
| Nicht tragende Wand | ■ |

Untergeschoss

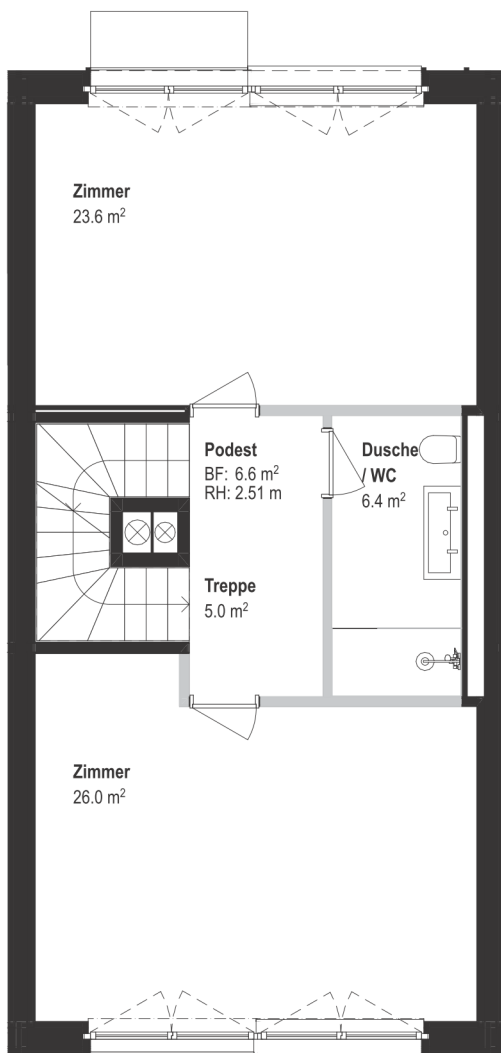


Erdgeschoss

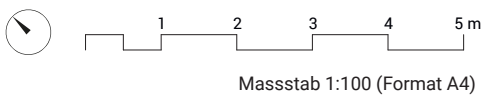
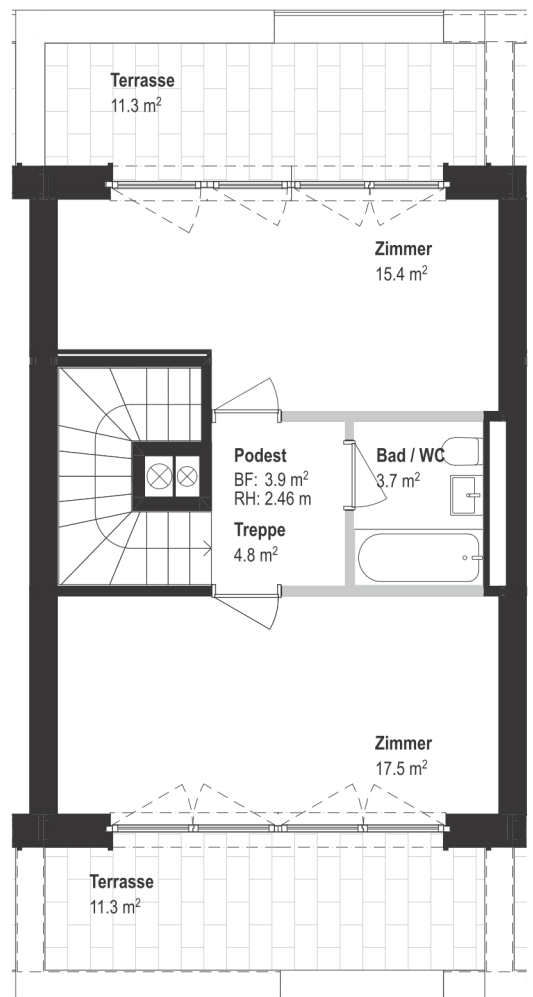


Massstab 1:100 (Format A4)

1. Obergeschoss




2. Obergeschoss

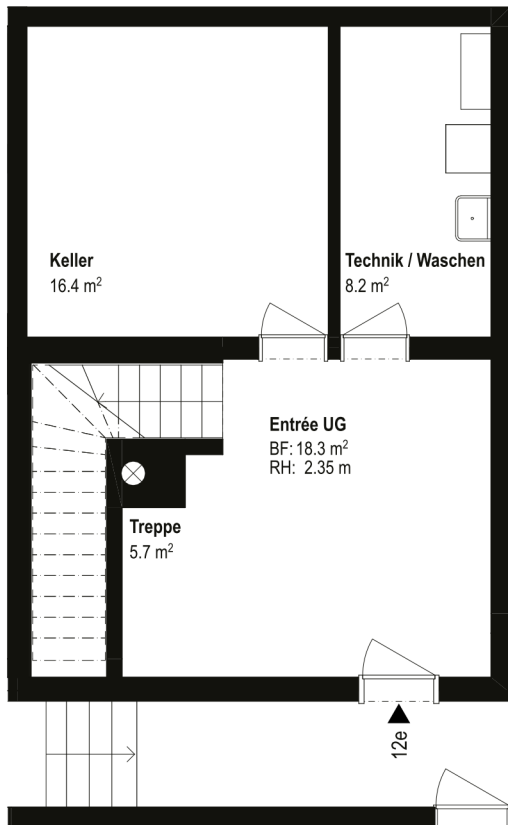


Strubenacher

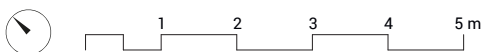
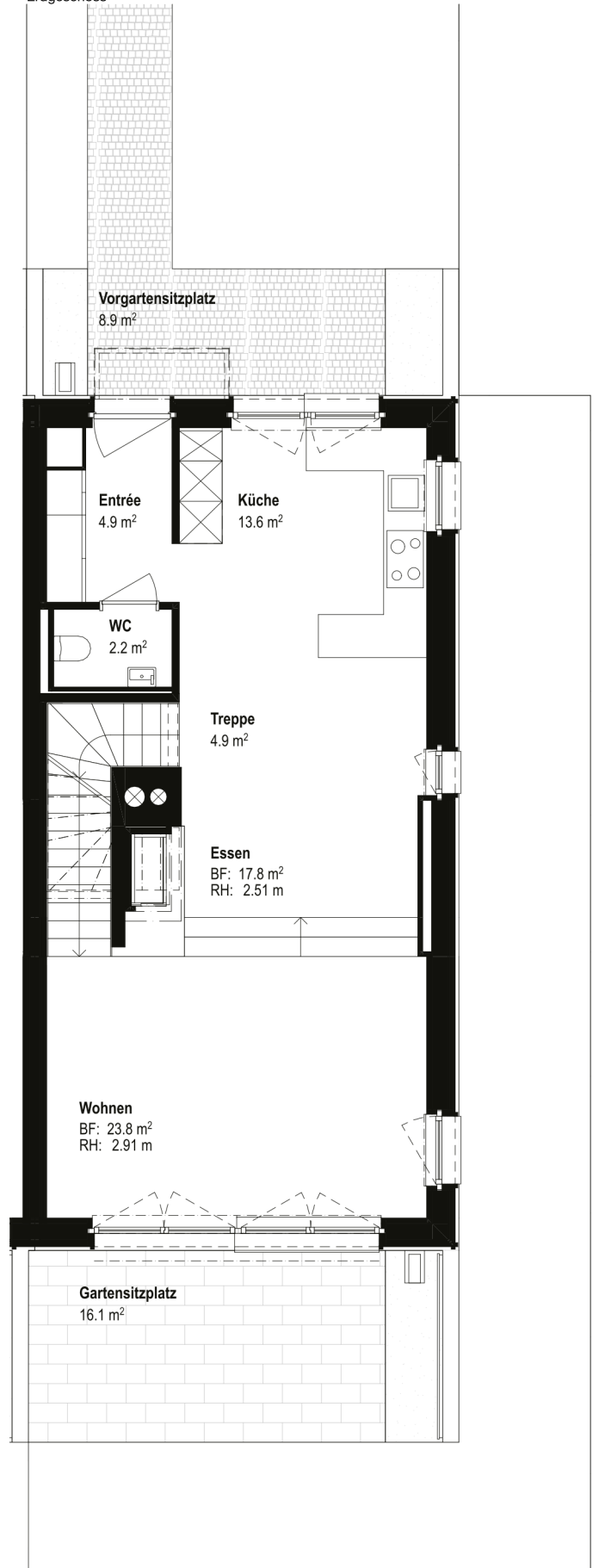


| | |
|---------------------------|---|
| Reiheneinfamilienhaus 12e | 5.5 Zimmer |
| Parzellenfläche | ca. 244 m ² |
| Beheizte Wohnfläche | ca. 204 m ² |
| Oberirdische Wohnfläche | ca. 180 m ² |
| Nicht tragende Wand |  |

Untergeschoss

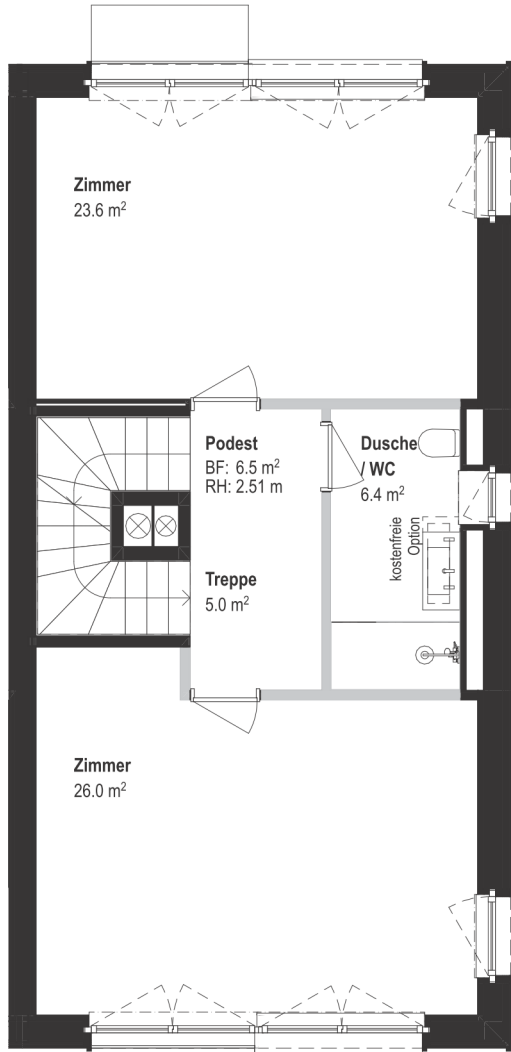


Erdgeschoss

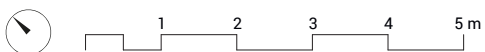
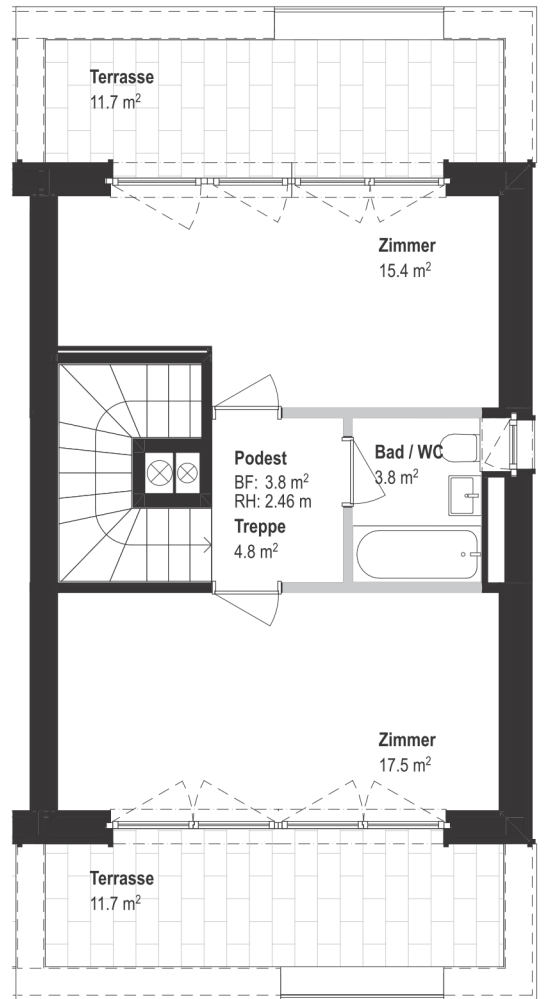


Massstab 1:100 (Format A4)

1. Obergeschoss




2. Obergeschoss



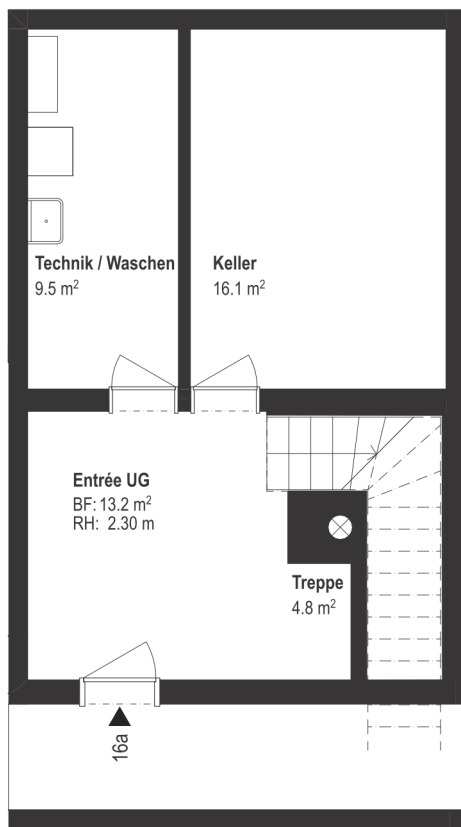
Massstab 1:100 (Format A4)

Strubenacher

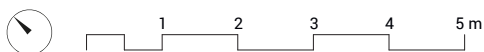
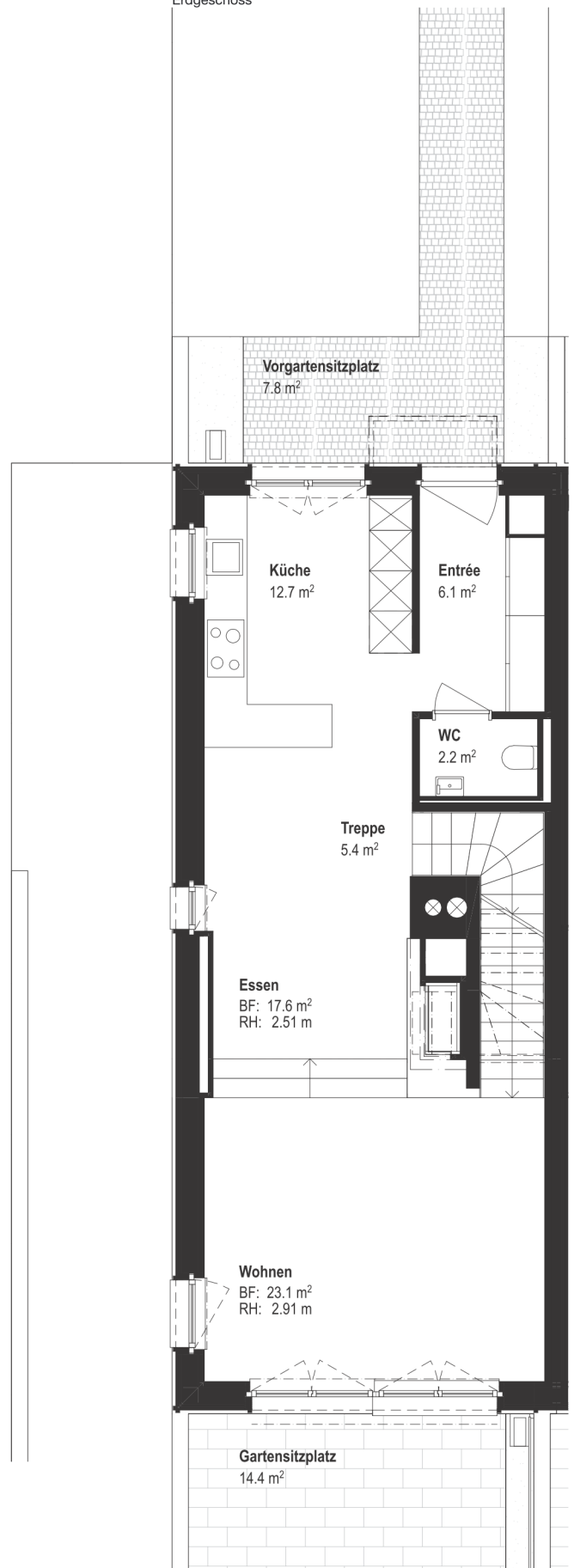


| | |
|---------------------------|---|
| Reiheneinfamilienhaus 16a | 5.5 Zimmer |
| Parzellenfläche | ca. 247 m ² |
| Beheizte Wohnfläche | ca. 199 m ² |
| Oberirdische Wohnfläche | ca. 181 m ² |
| Nicht tragende Wand |  |

Untergeschoss



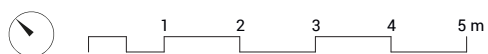
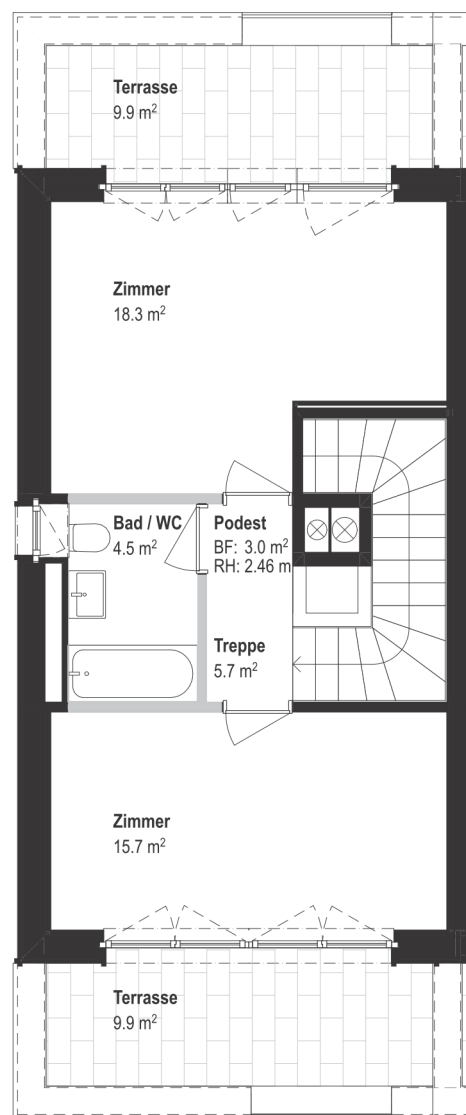
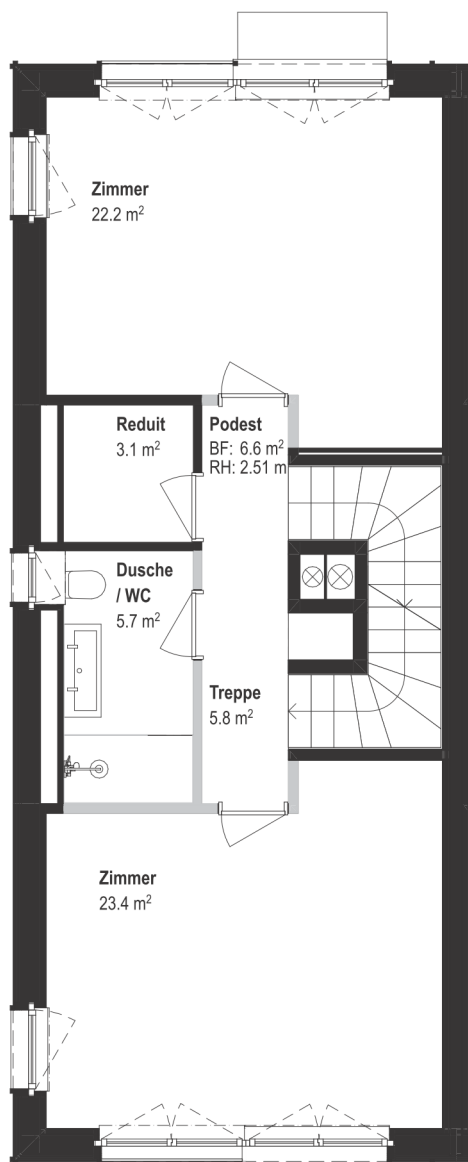
Erdgeschoss



Massstab 1:100 (Format A4)

1. Obergeschoss

2. Obergeschoss



Massstab 1:100 (Format A4)

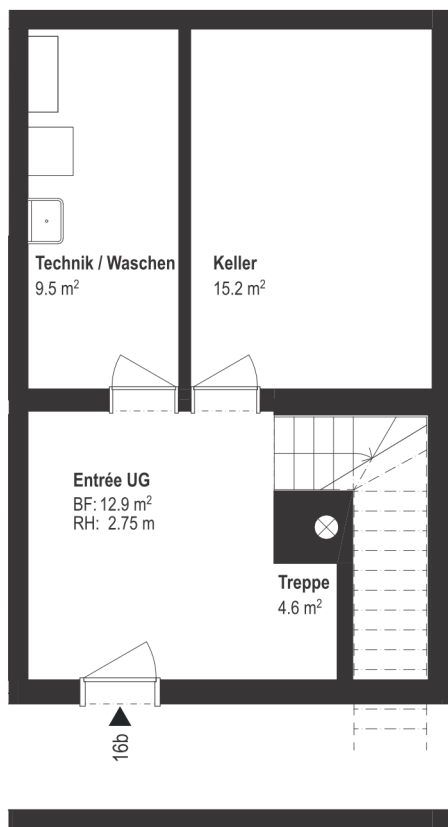
Alle Angaben, Pläne, Zeichnungen usw. sind unverbindlich.
Änderungen bleiben vorbehalten. Stand Dezember 2024

Strubenacher

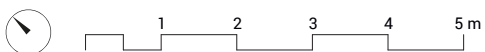
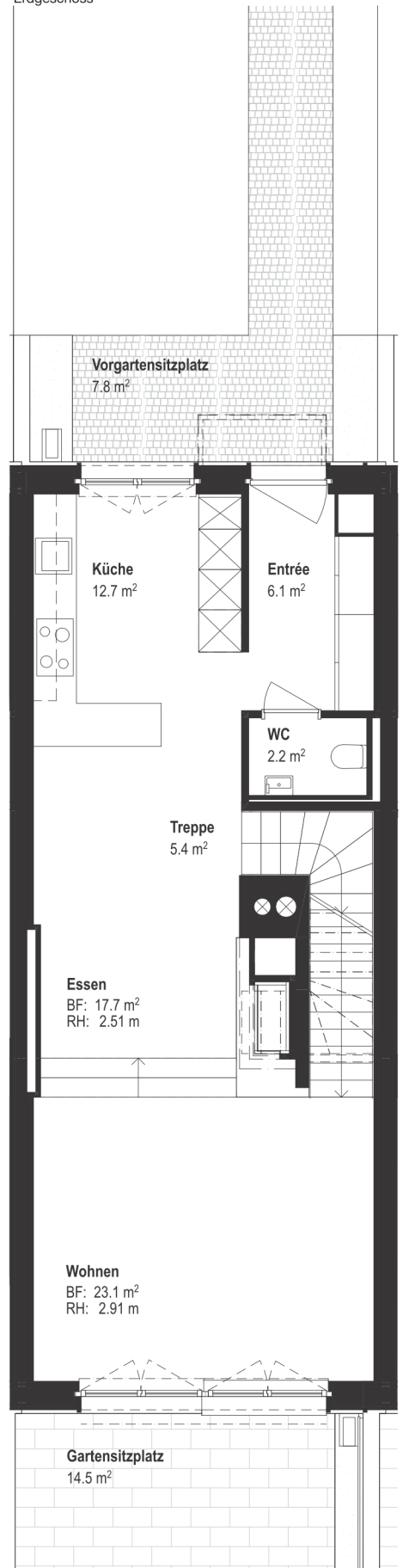


| | |
|---------------------------|------------------------|
| Reiheneinfamilienhaus 16b | 5.5 Zimmer |
| Parzellenfläche | ca. 186 m ² |
| Beheizte Wohnfläche | ca. 199 m ² |
| Oberirdische Wohnfläche | ca. 181 m ² |
| Nicht tragende Wand | ■ |

Untergeschoss

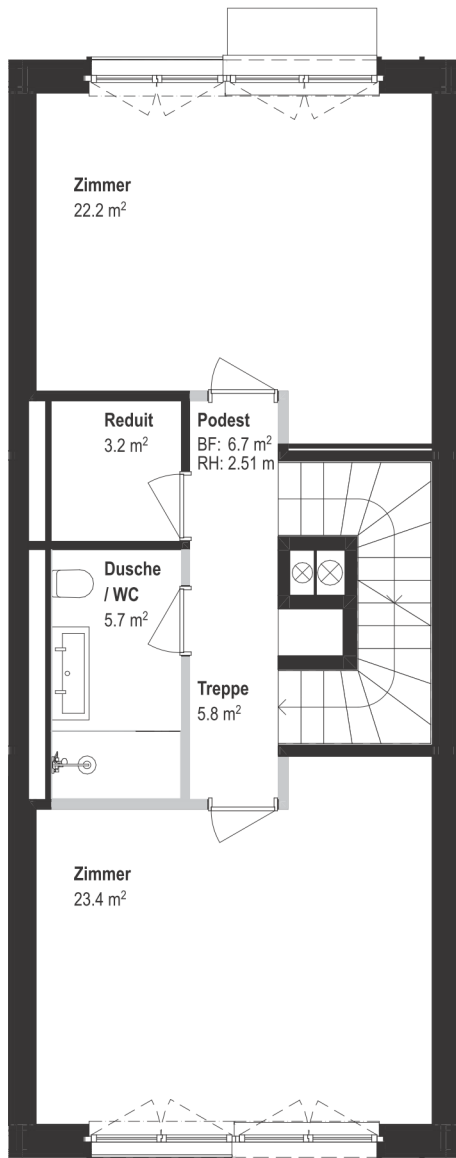


Erdgeschoss

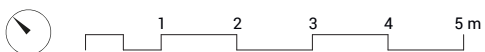
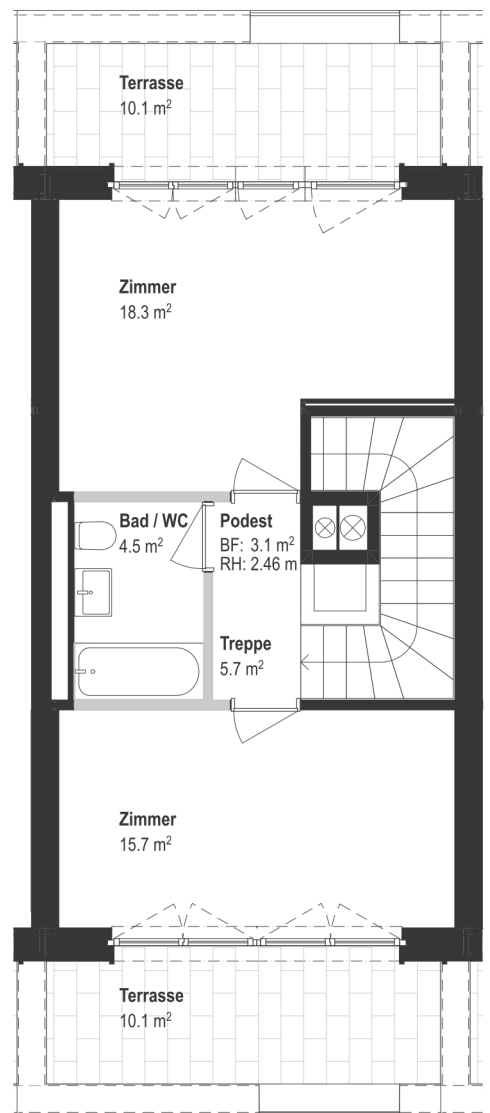


Massstab 1:100 (Format A4)

1. Obergeschoss



2. Obergeschoss



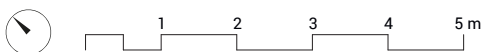
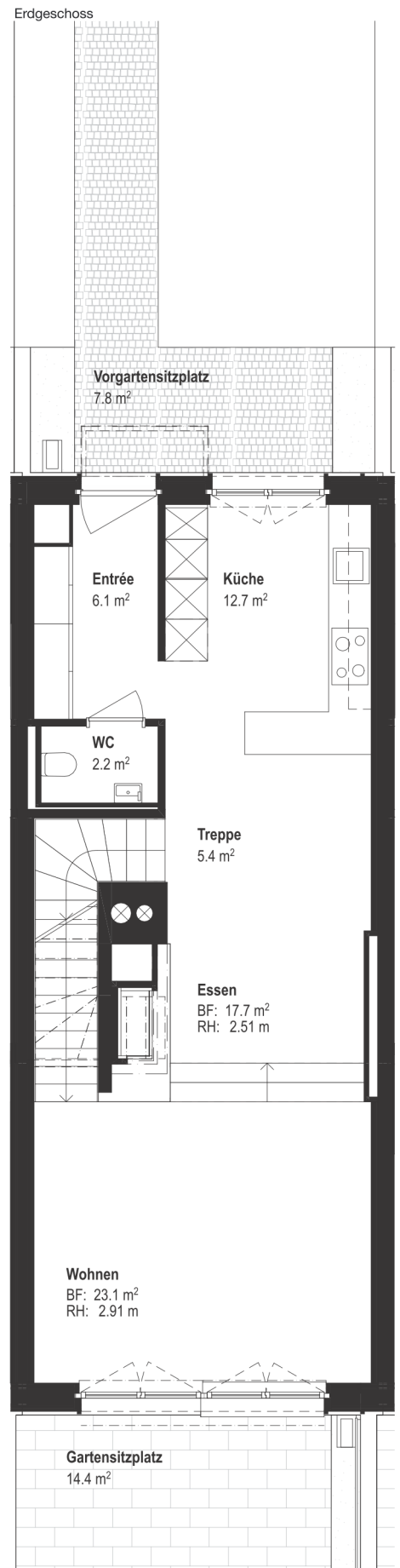
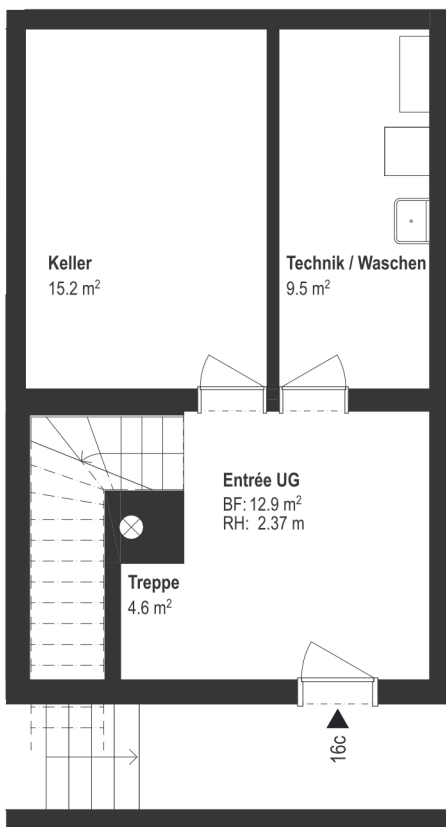
Massstab 1:100 (Format A4)

Strubenacher



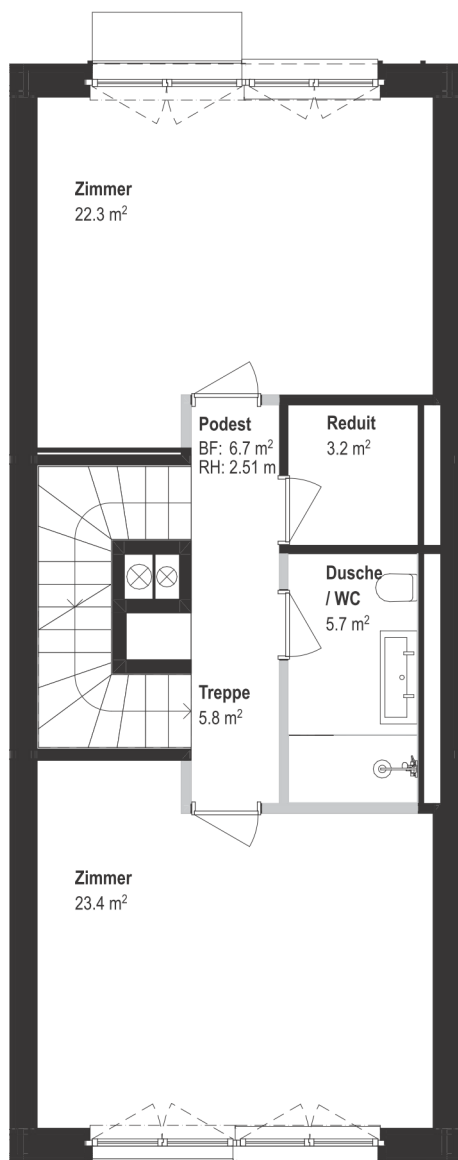
| | |
|---------------------------|------------------------|
| Reiheneinfamilienhaus 16c | 5.5 Zimmer |
| Parzellenfläche | ca. 191 m ² |
| Beheizte Wohnfläche | ca. 199 m ² |
| Oberirdische Wohnfläche | ca. 181 m ² |
| Nicht tragende Wand | ■ |

Untergeschoss

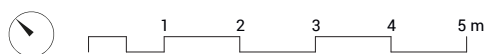
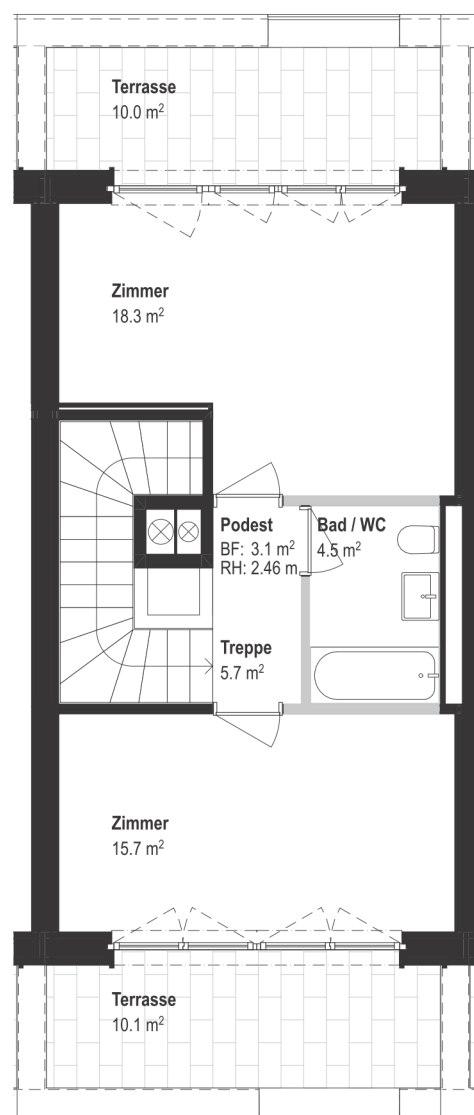


Massstab 1:100 (Format A4)

1. Obergeschoss




2. Obergeschoss



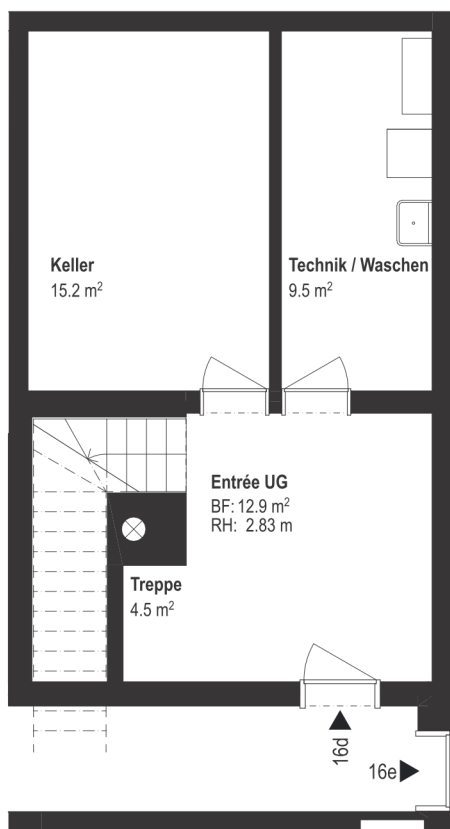
Massstab 1:100 (Format A4)

Strubenacher

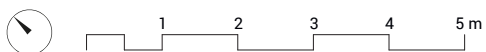
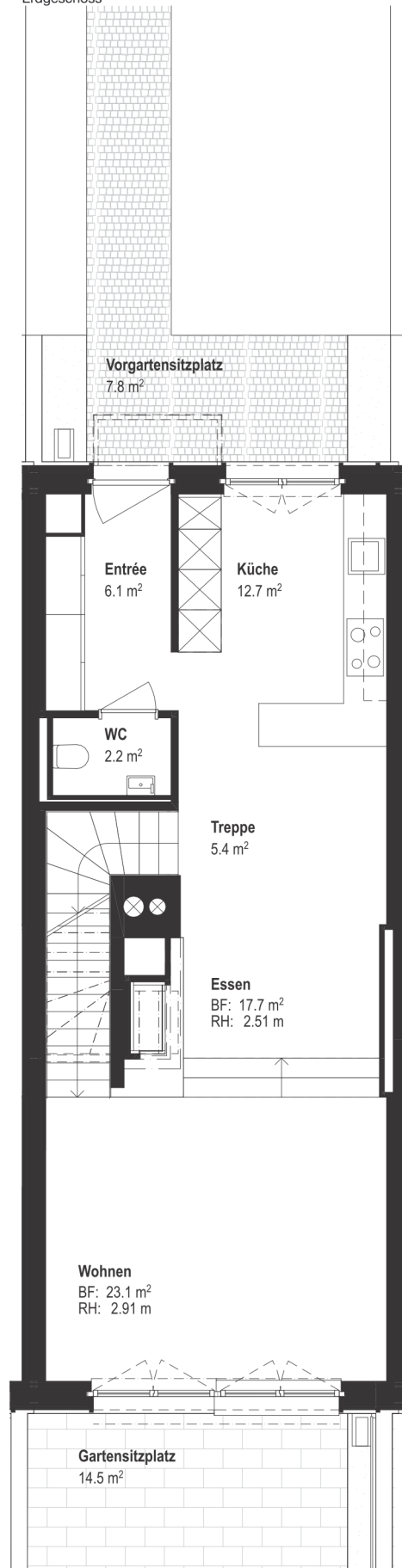


| | |
|---------------------------|---|
| Reiheneinfamilienhaus 16d | 5.5 Zimmer |
| Parzellenfläche | ca. 196 m ² |
| Beheizte Wohnfläche | ca. 199 m ² |
| Oberirdische Wohnfläche | ca. 181 m ² |
| Nicht tragende Wand |  |

Untergeschoss

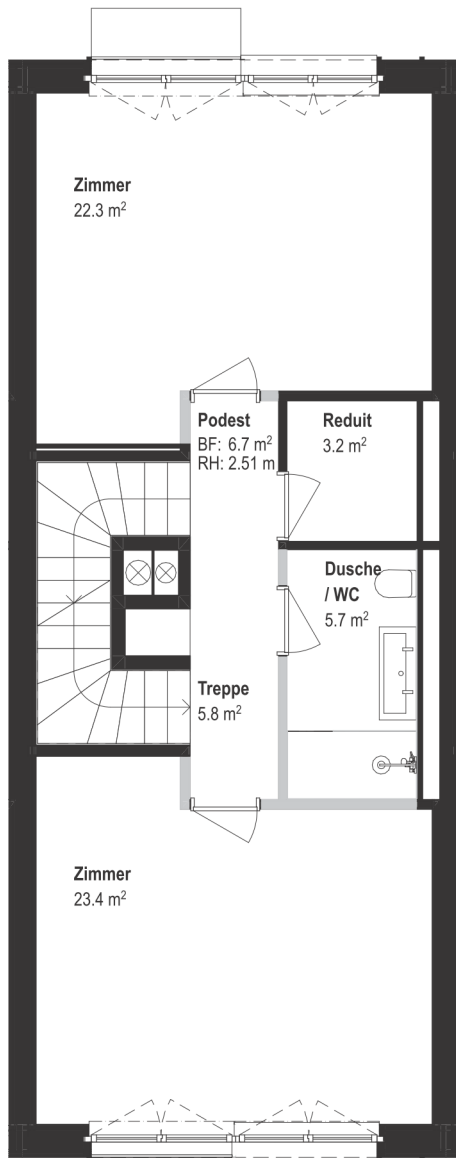


Erdgeschoss

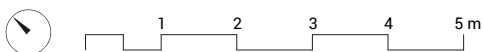
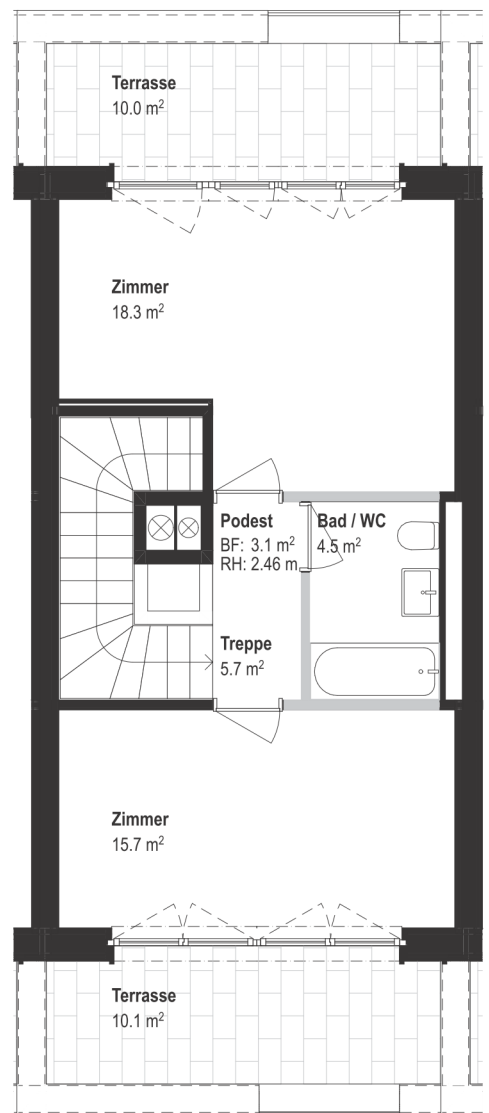


Massstab 1:100 (Format A4)

1. Obergeschoss



2. Obergeschoss



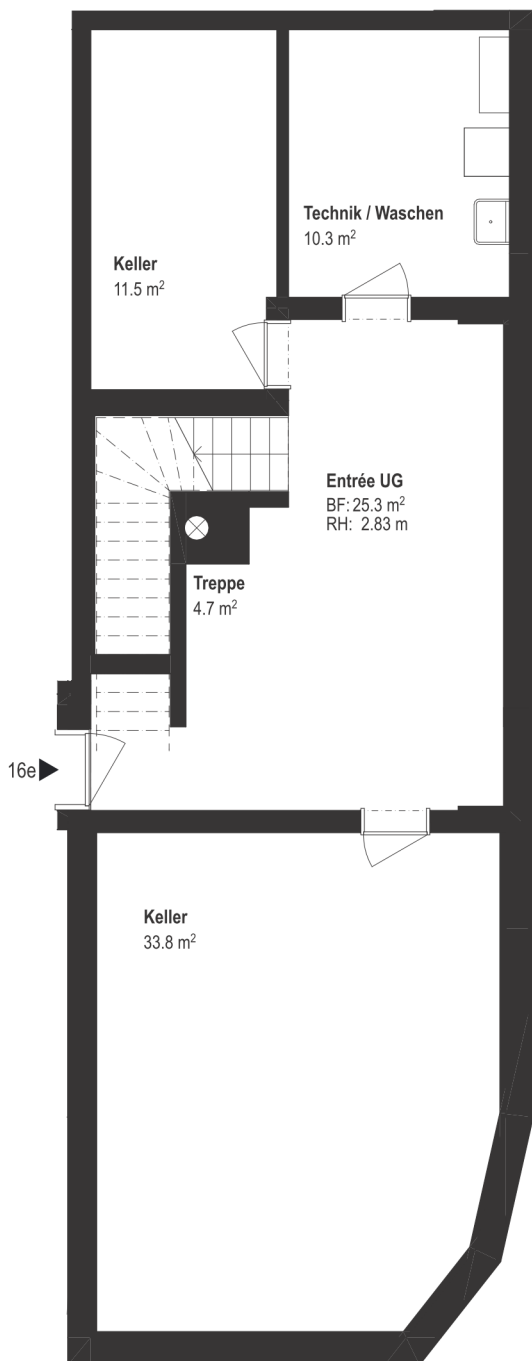
Massstab 1:100 (Format A4)

Strubenacher

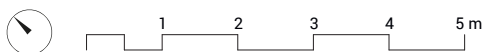
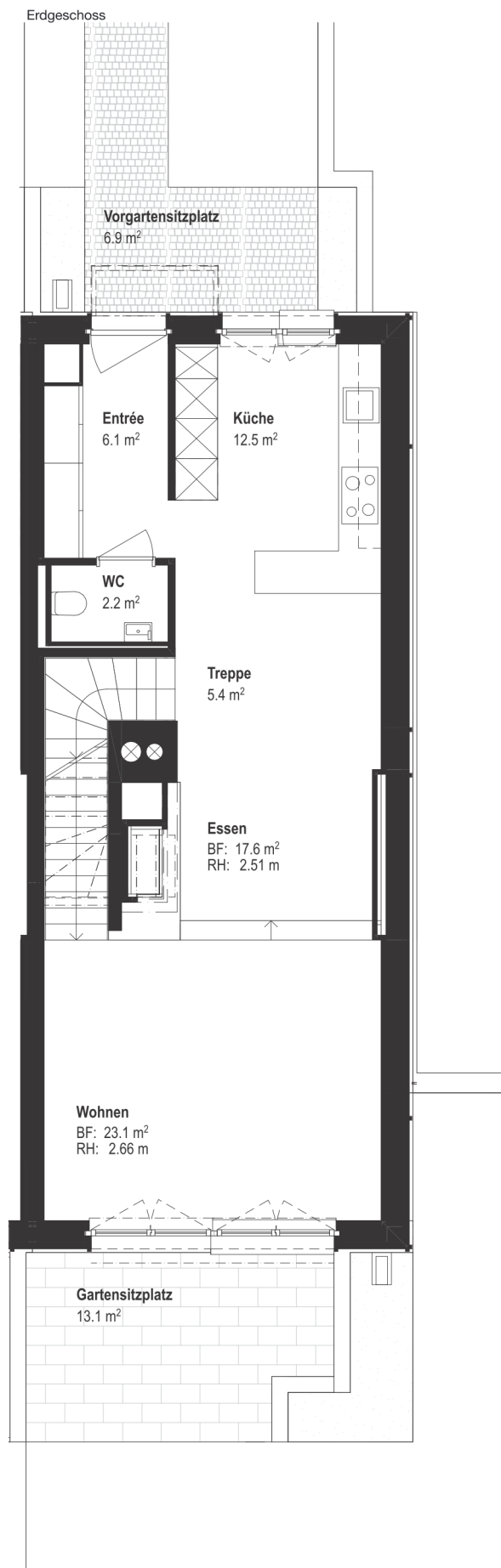


| | |
|---------------------------|------------------------|
| Reiheneinfamilienhaus 16e | 5.5 Zimmer |
| Parzellenfläche | ca. 268 m ² |
| Beheizte Wohnfläche | ca. 211 m ² |
| Oberirdische Wohnfläche | ca. 181 m ² |
| Nicht tragende Wand | ■ |

Untergeschoss

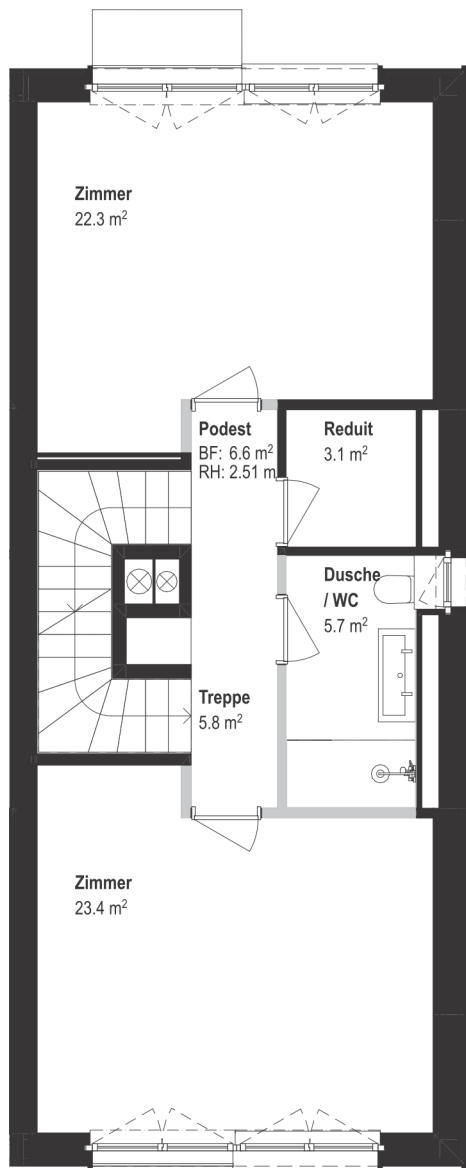


Erdgeschoss

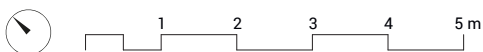
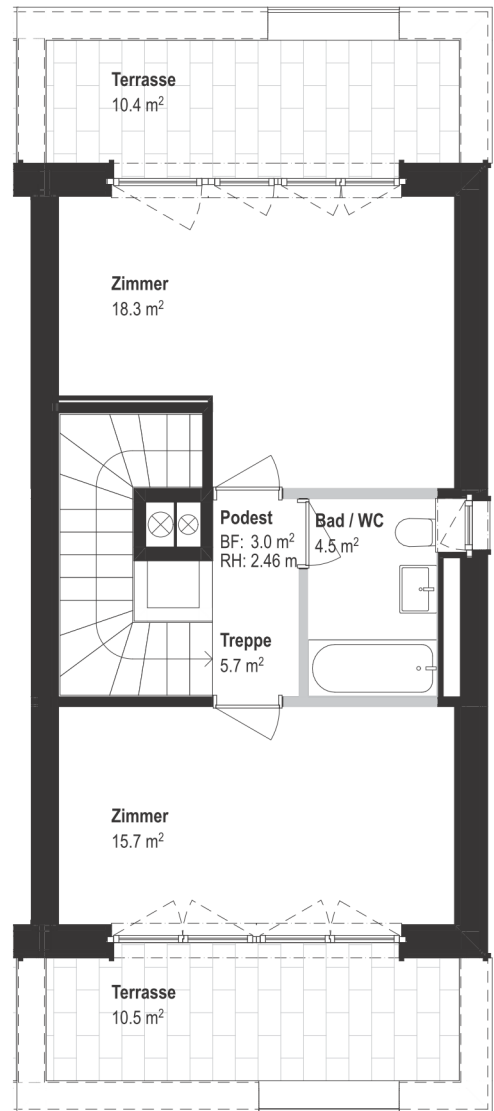


Massstab 1:100 (Format A4)

1. Obergeschoss



2. Obergeschoss



Massstab 1:100 (Format A4)

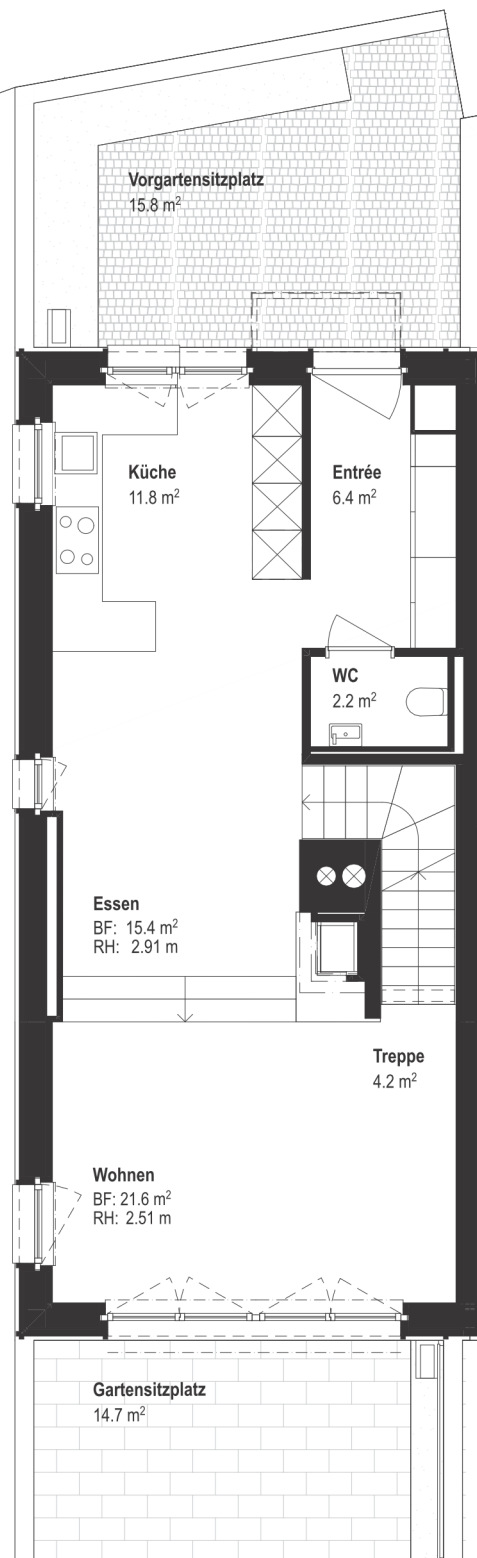
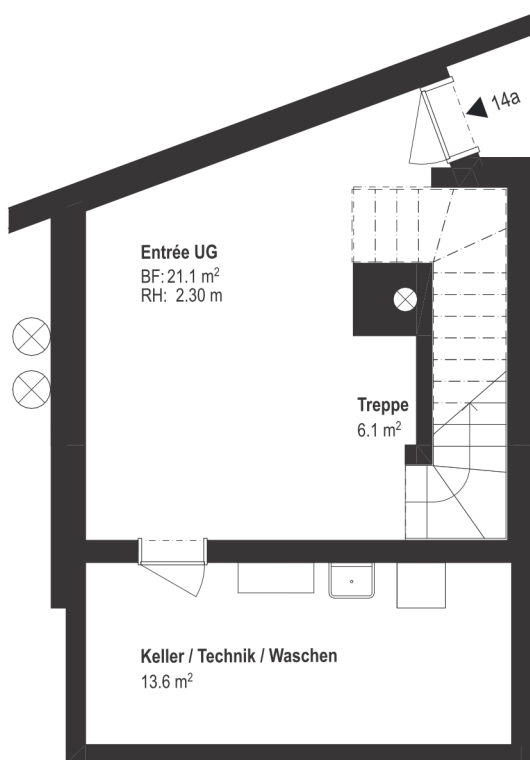
Strubenacher



| | |
|---------------------------|------------------------|
| Reiheneinfamilienhaus 14a | 5.5 Zimmer |
| Parzellenfläche | ca. 250 m ² |
| Beheizte Wohnfläche | ca. 191 m ² |
| Oberirdische Wohnfläche | ca. 164 m ² |
| Nicht tragende Wand | ■ |

Erdgeschoss

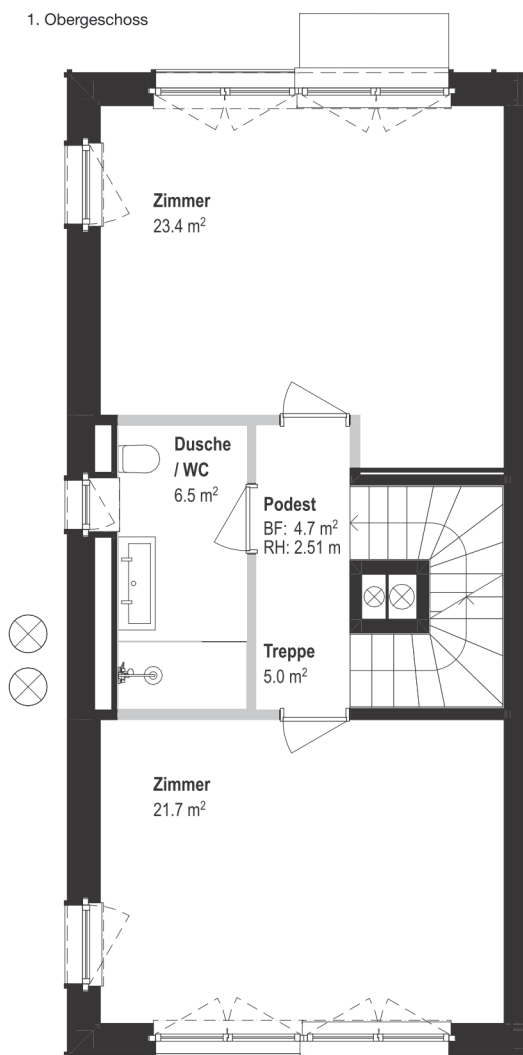
Untergeschoss



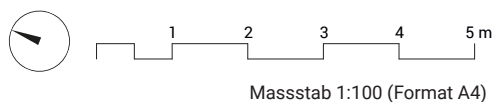
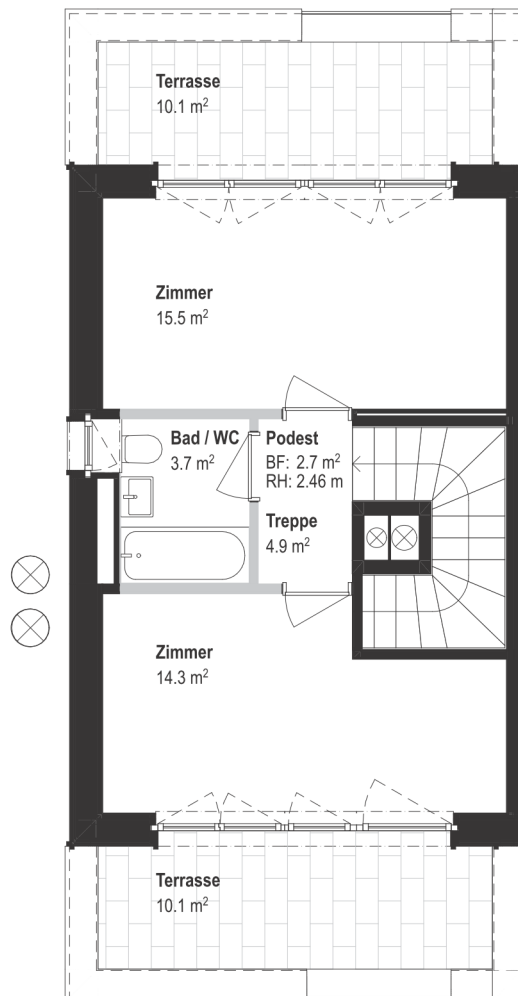
Massstab 1:100 (Format A4)

Alle Angaben, Pläne, Zeichnungen usw. sind unverbindlich.
Änderungen bleiben vorbehalten. Stand Dezember 2024

1. Obergeschoss



2. Obergeschoss



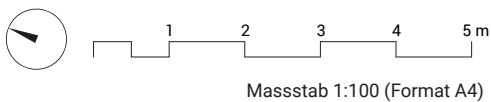
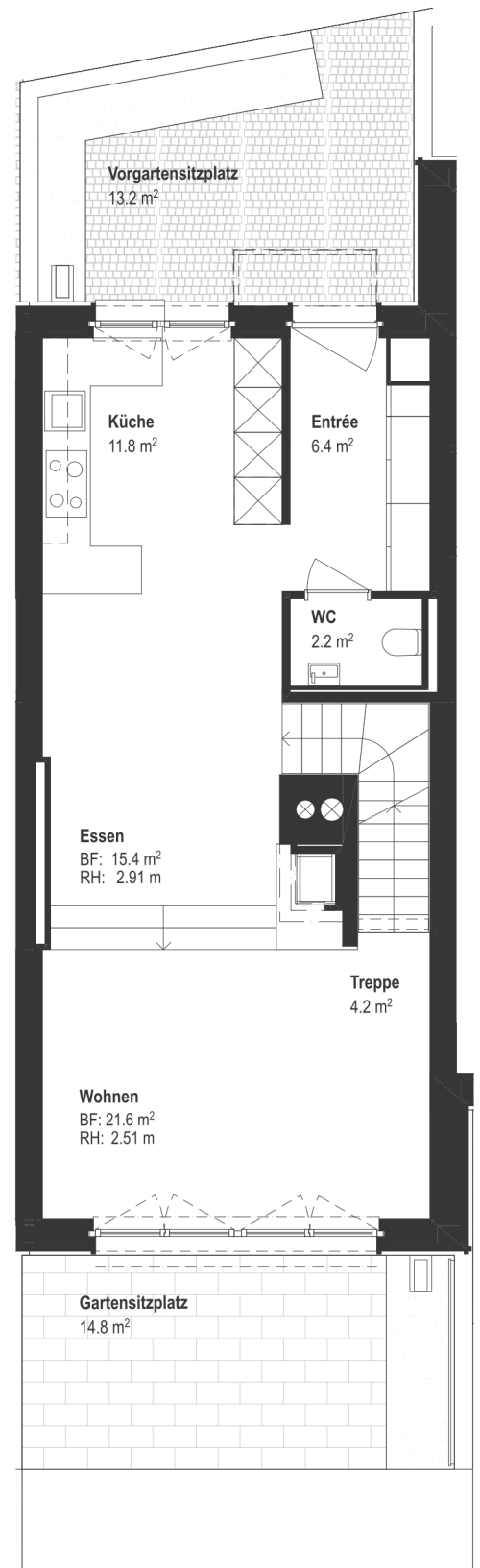
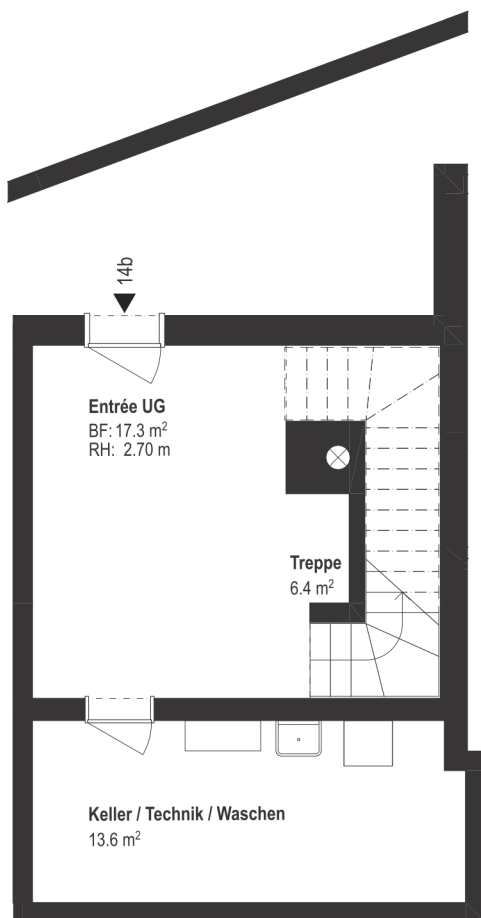
Strubenacher



| | |
|---------------------------|------------------------|
| Reiheneinfamilienhaus 14b | 5.5 Zimmer |
| Parzellenfläche | ca. 143 m ² |
| Beheizte Wohnfläche | ca. 188 m ² |
| Oberirdische Wohnfläche | ca. 164 m ² |
| Nicht tragende Wand | ■ |

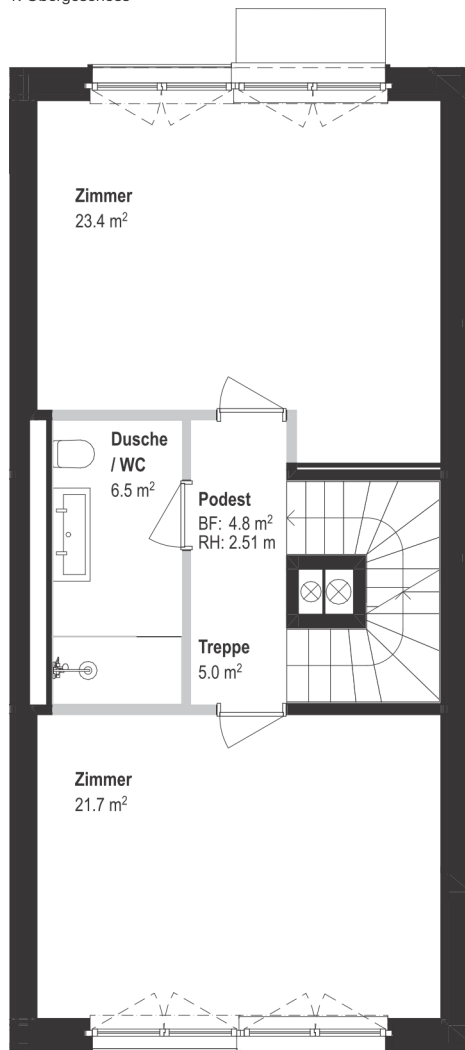
Erdgeschoss

Untergeschoss

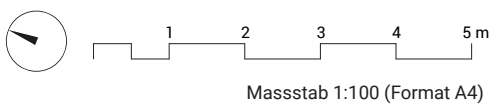
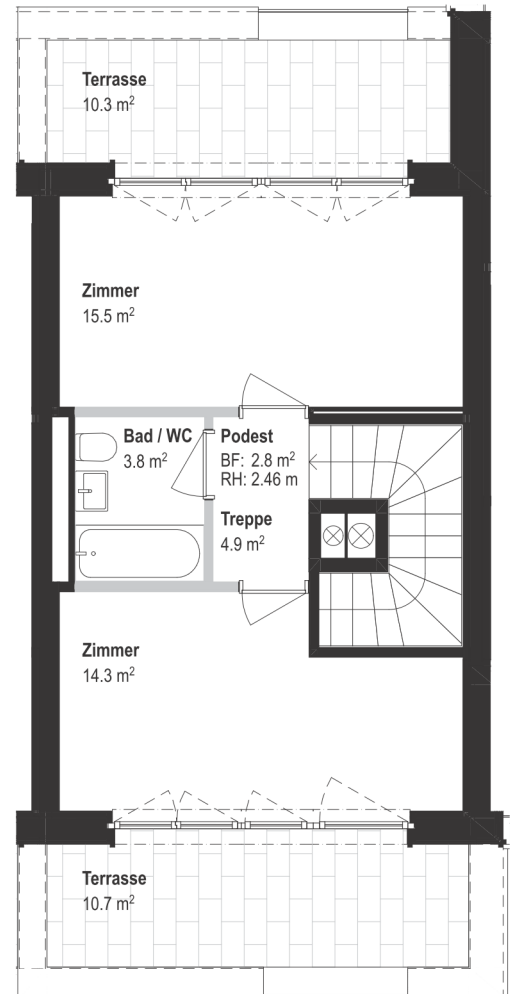


Alle Angaben, Pläne, Zeichnungen usw. sind unverbindlich.
Änderungen bleiben vorbehalten. Stand Dezember 2024

1. Obergeschoss




2. Obergeschoss



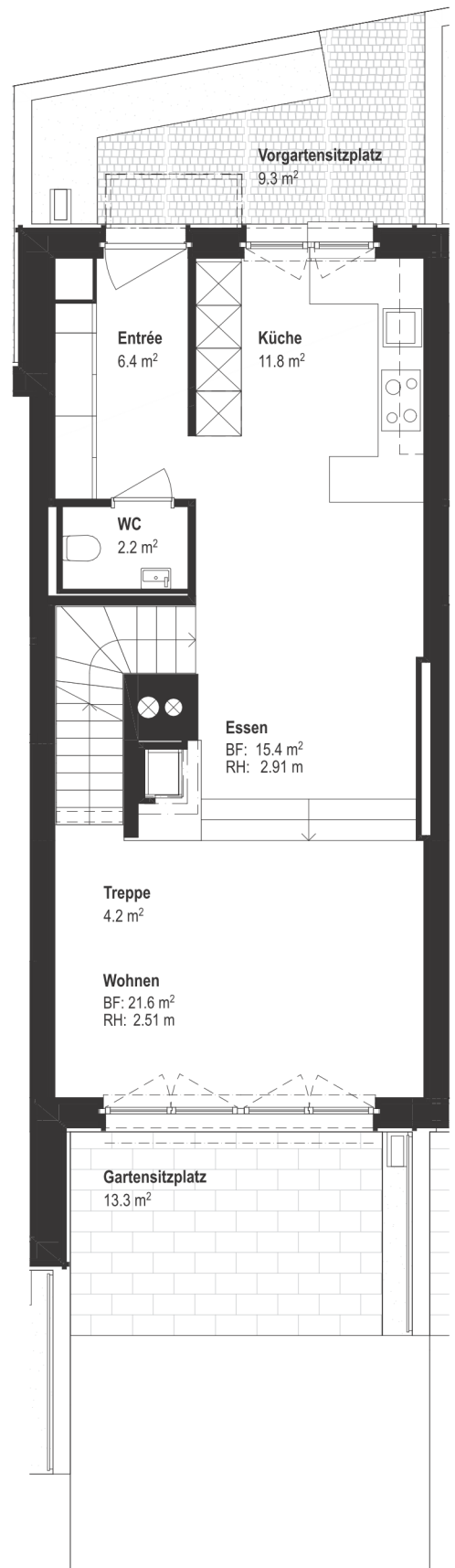
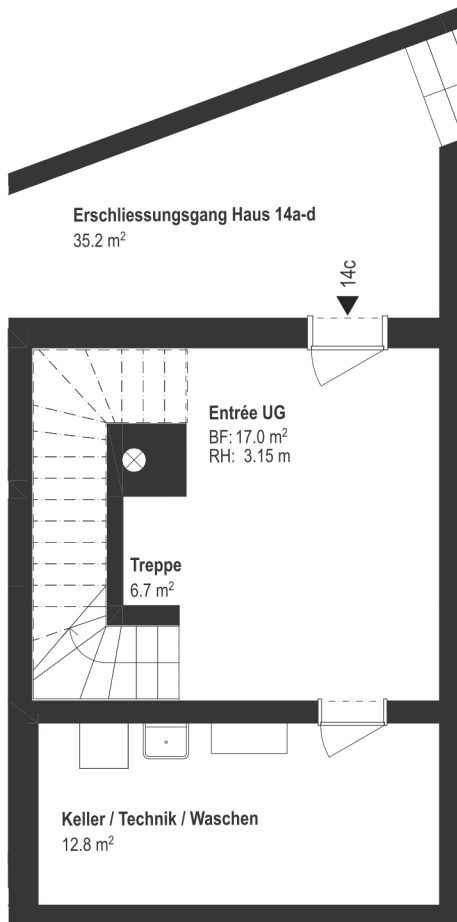
Strubenacher



| | |
|---------------------------|---|
| Reiheneinfamilienhaus 14c | 5.5 Zimmer |
| Parzellenfläche | ca. 141 m ² |
| Beheizte Wohnfläche | ca. 188 m ² |
| Oberirdische Wohnfläche | ca. 164 m ² |
| Nicht tragende Wand |  |

Erdgeschoss

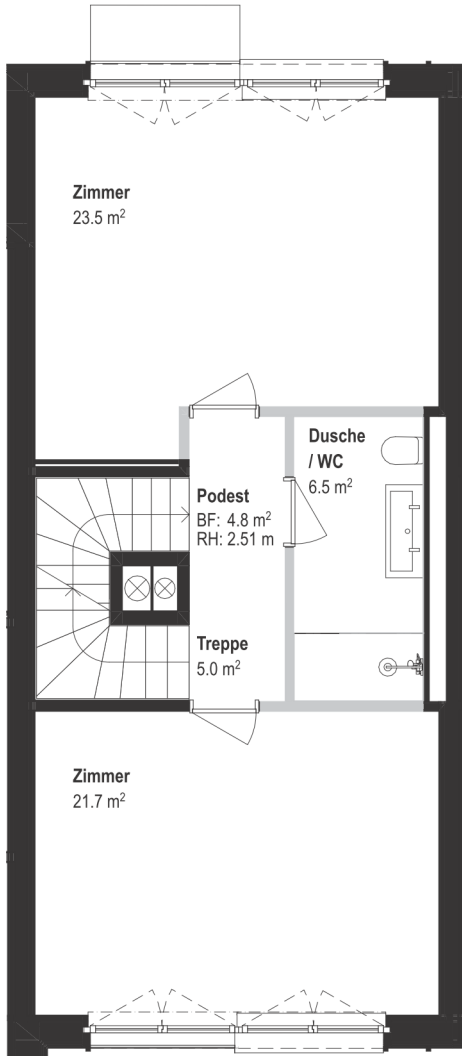
Untergeschoss



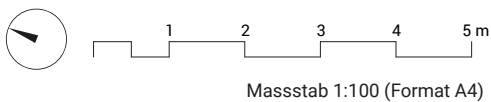
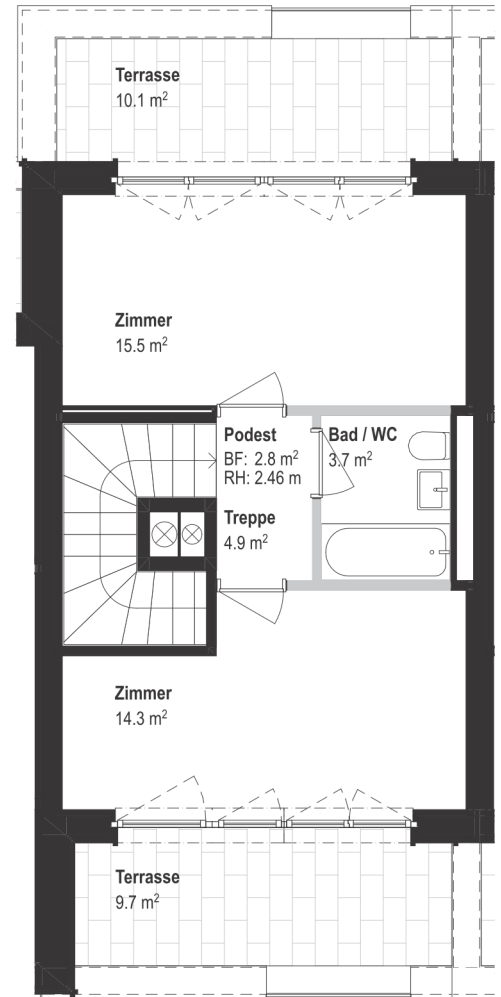
Massstab 1:100 (Format A4)

Alle Angaben, Pläne, Zeichnungen usw. sind unverbindlich. Änderungen bleiben vorbehalten. Stand Dezember 2024

1. Obergeschoss




2. Obergeschoss



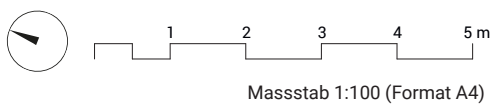
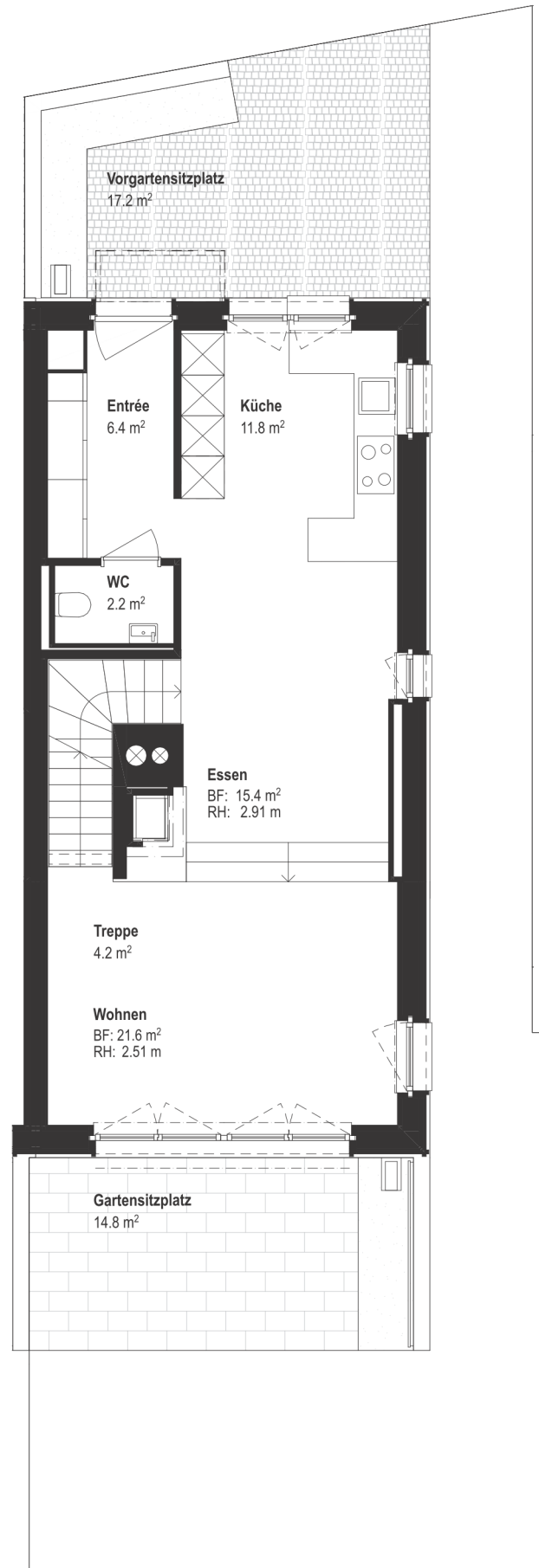
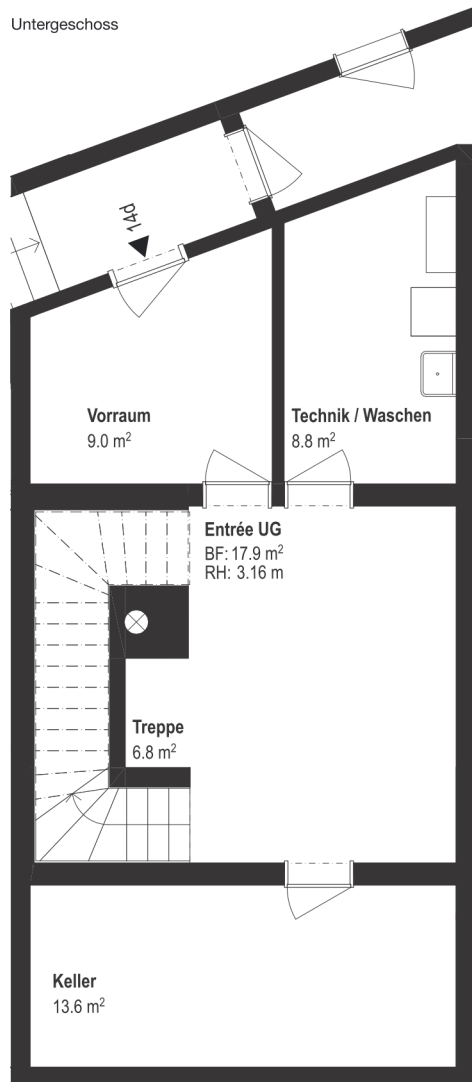
Strubenacher



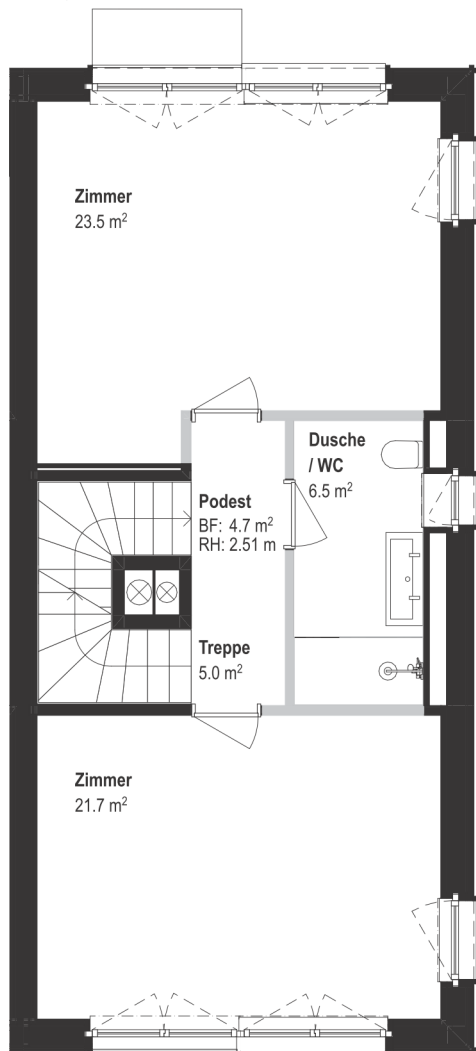
| | |
|---------------------------|---|
| Reiheneinfamilienhaus 14d | 5.5 Zimmer |
| Parzellenfläche | ca. 228 m ² |
| Beheizte Wohnfläche | ca. 188 m ² |
| Oberirdische Wohnfläche | ca. 164 m ² |
| Nicht tragende Wand |  |

Erdgeschoss

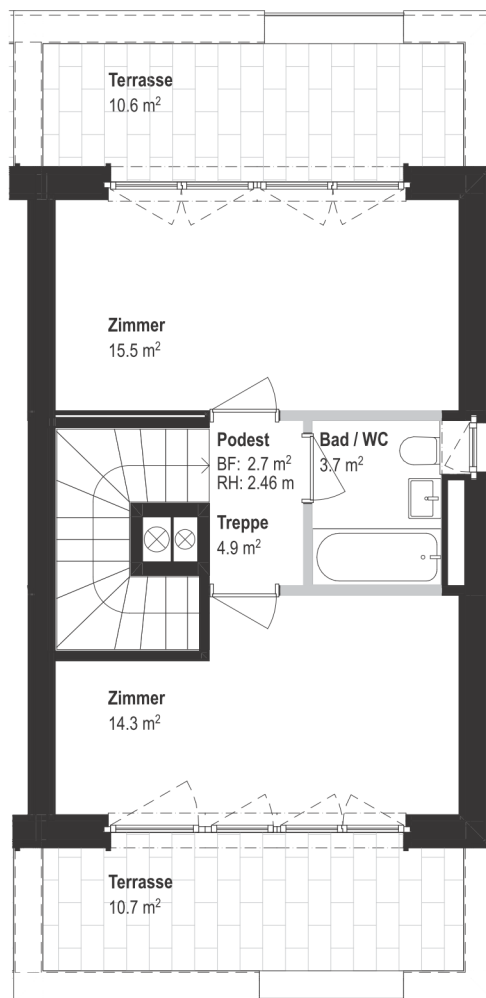
Untergeschoss



1. Obergeschoss




2. Obergeschoss



Massstab 1:100 (Format A4)

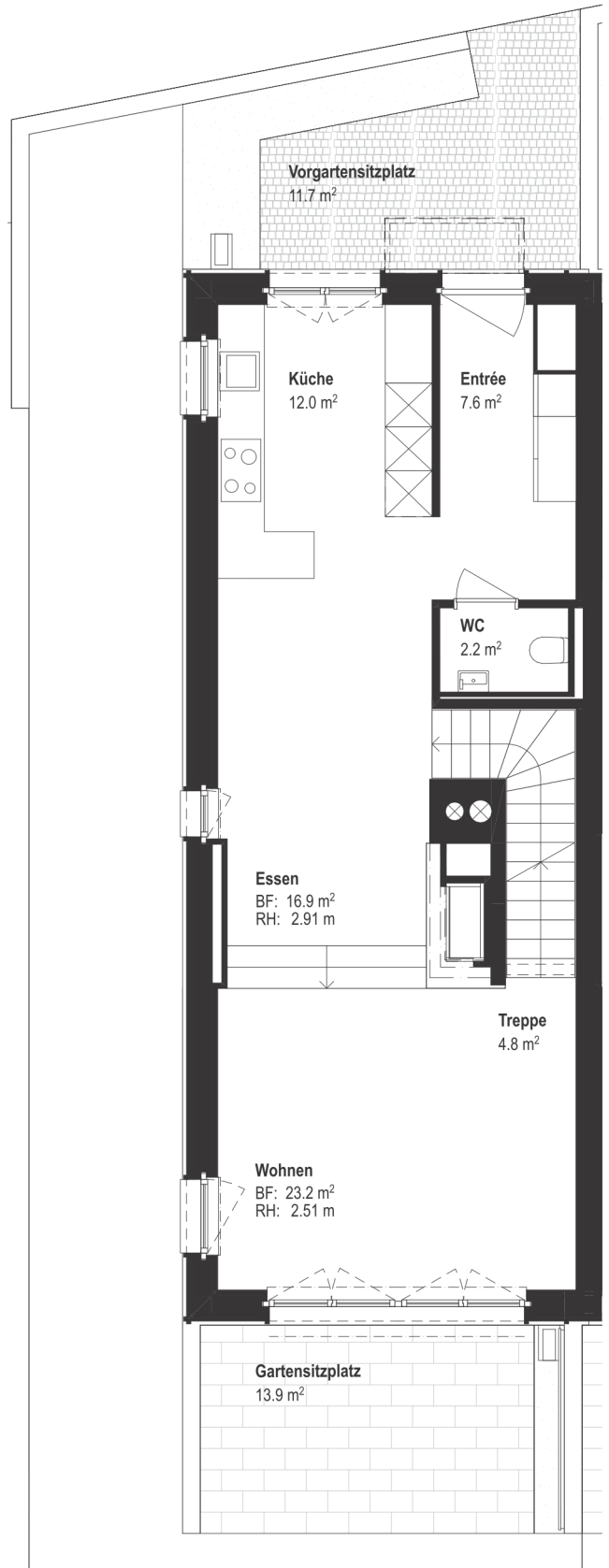
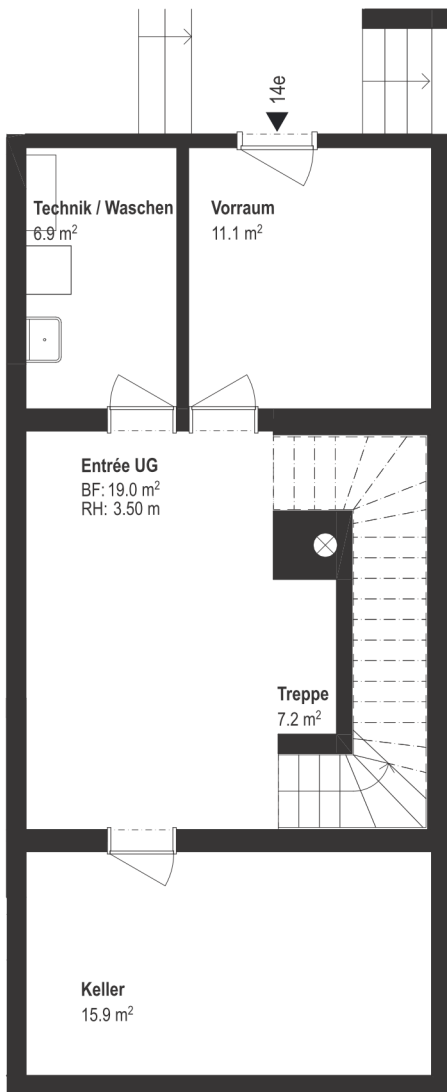
Strubenacher



| | |
|---------------------------|---|
| Reiheneinfamilienhaus 14e | 5.5 Zimmer |
| Parzellenfläche | ca. 233 m ² |
| Beheizte Wohnfläche | ca. 205 m ² |
| Oberirdische Wohnfläche | ca. 179 m ² |
| Nicht tragende Wand |  |

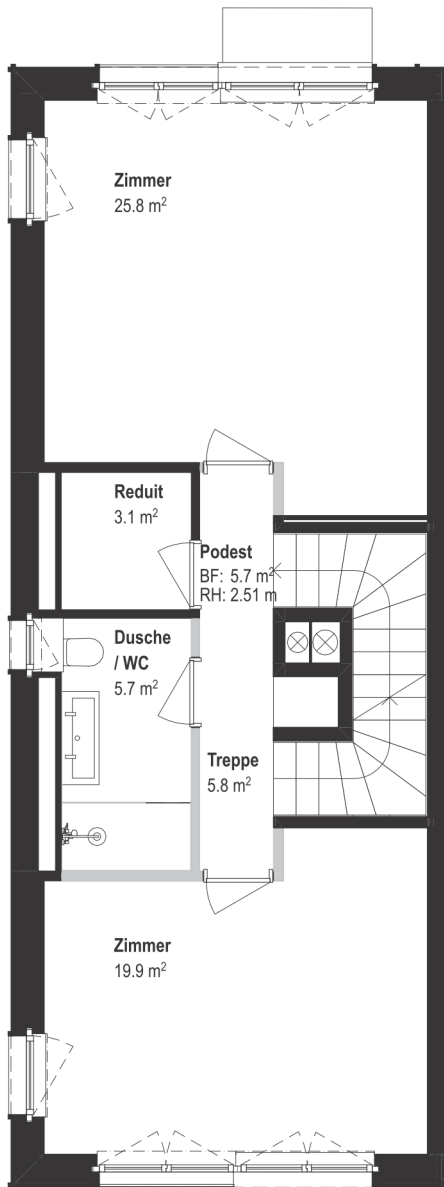
Erdgeschoss

Untergeschoss

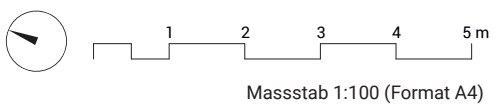
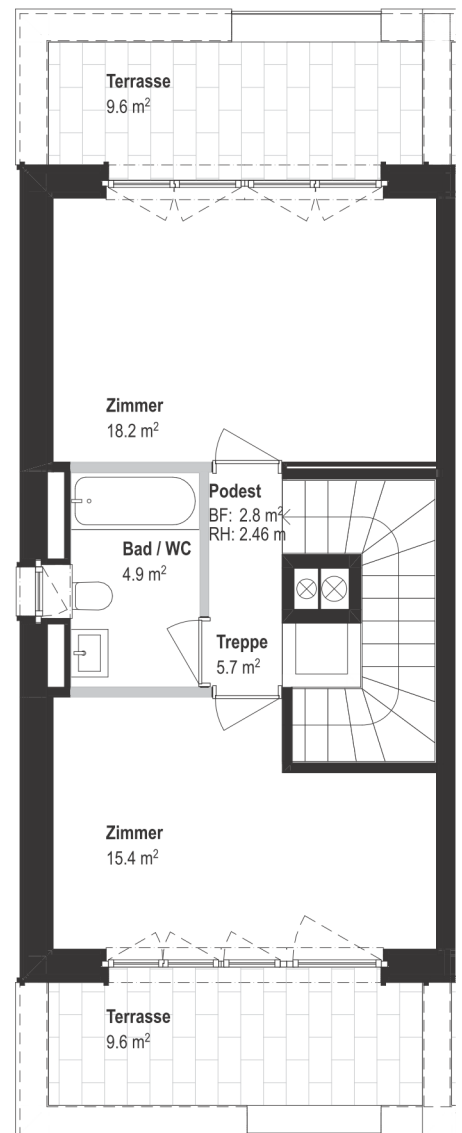


Massstab 1:100 (Format A4)

1. Obergeschoss



2. Obergeschoss



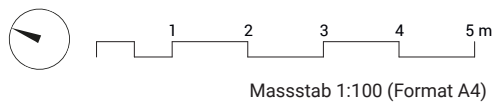
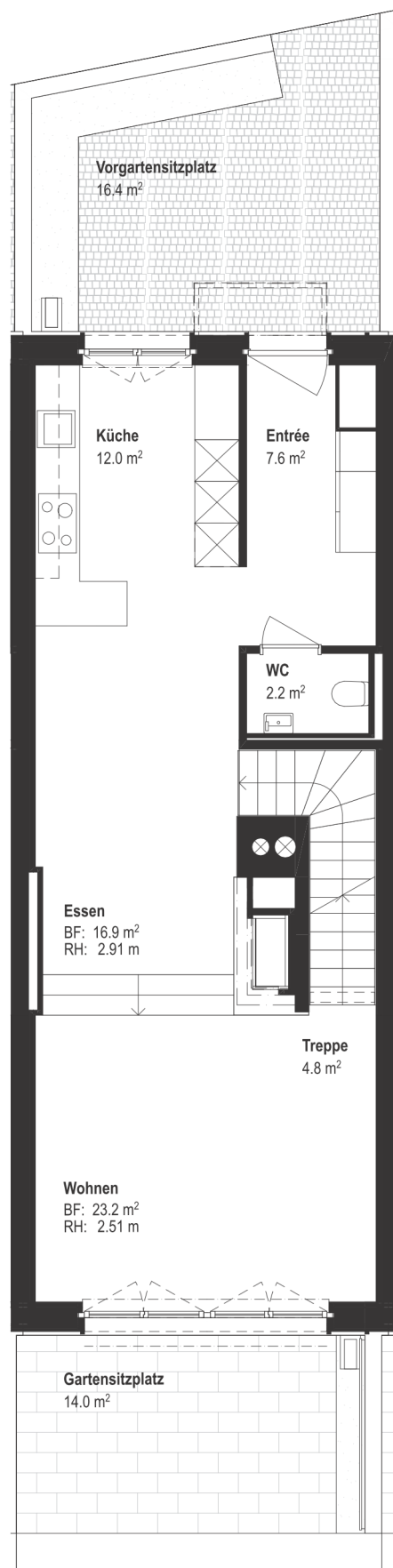
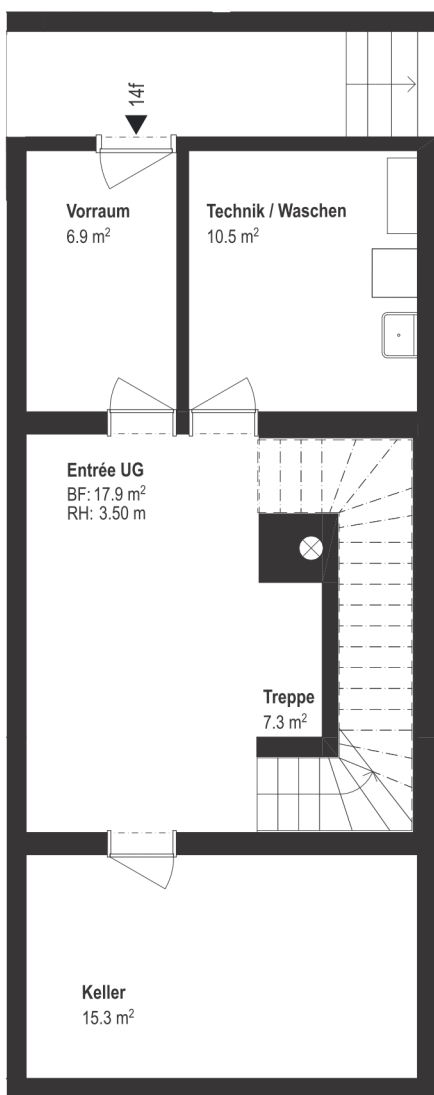
Strubenacher



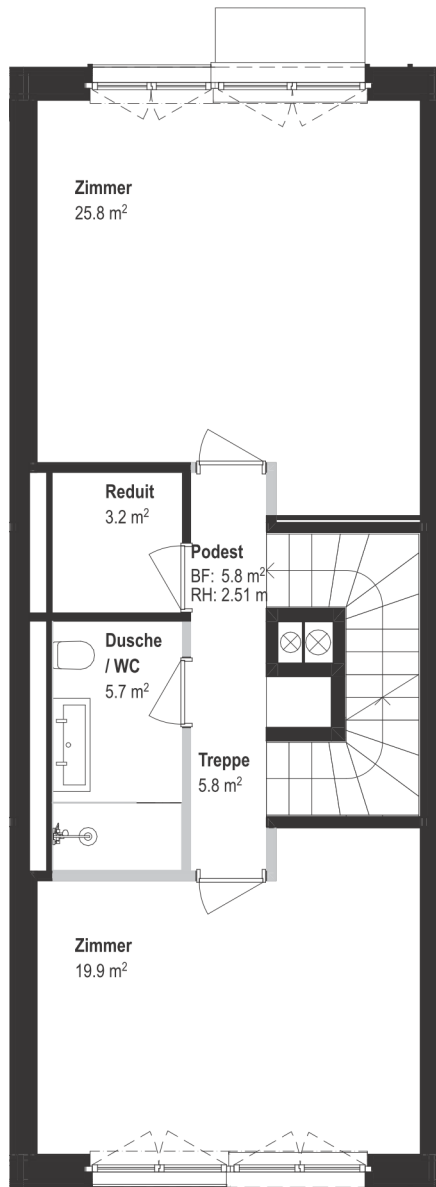
| | |
|---------------------------|------------------------|
| Reiheneinfamilienhaus 14f | 5.5 Zimmer |
| Parzellenfläche | ca. 168 m ² |
| Beheizte Wohnfläche | ca. 205 m ² |
| Oberirdische Wohnfläche | ca. 179 m ² |
| Nicht tragende Wand | ■ |

Erdgeschoss

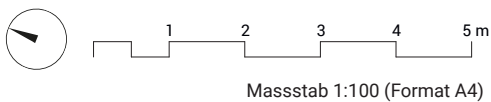
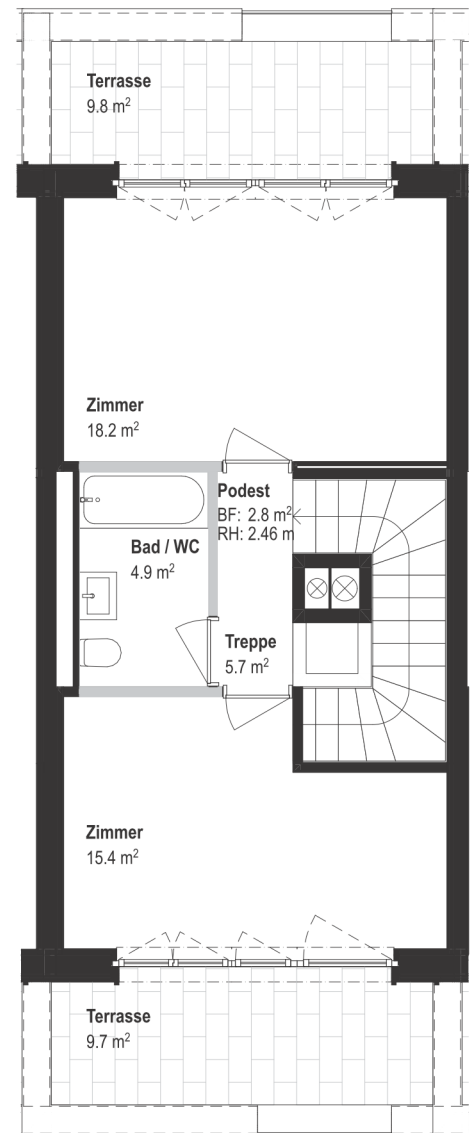
Untergeschoss



1. Obergeschoss



2. Obergeschoss

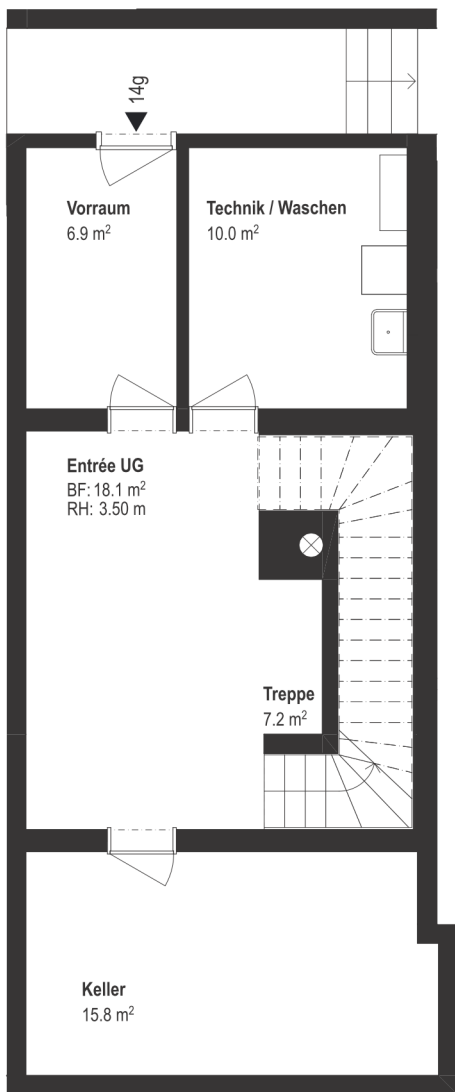


Strubenacher

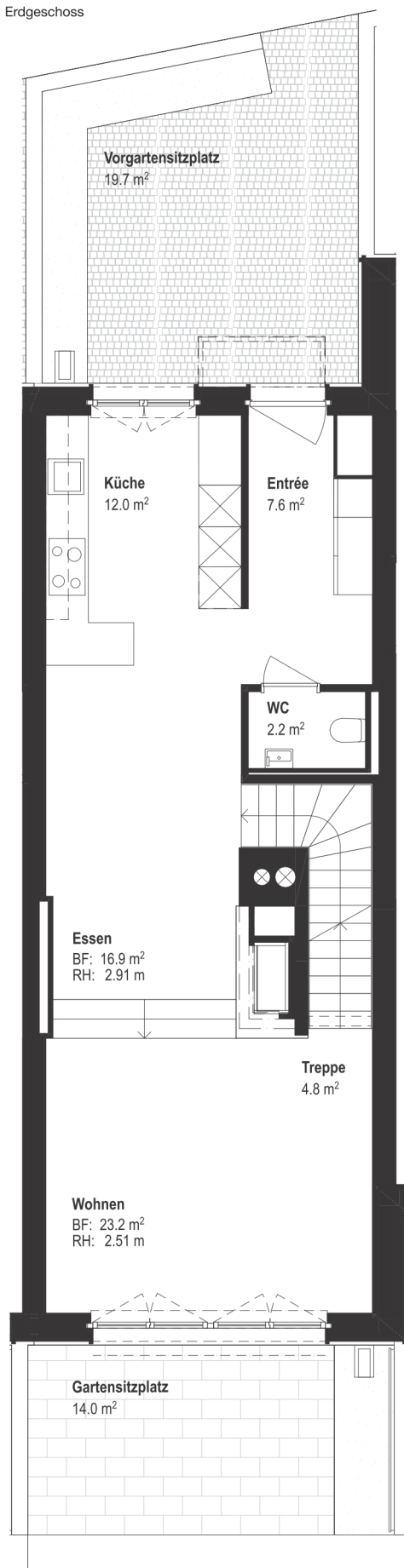


| | |
|---------------------------|------------------------|
| Reiheneinfamilienhaus 14g | 5.5 Zimmer |
| Parzellenfläche | ca. 178 m ² |
| Beheizte Wohnfläche | ca. 205 m ² |
| Oberirdische Wohnfläche | ca. 179 m ² |
| Nicht tragende Wand | ■ |

Untergeschoss

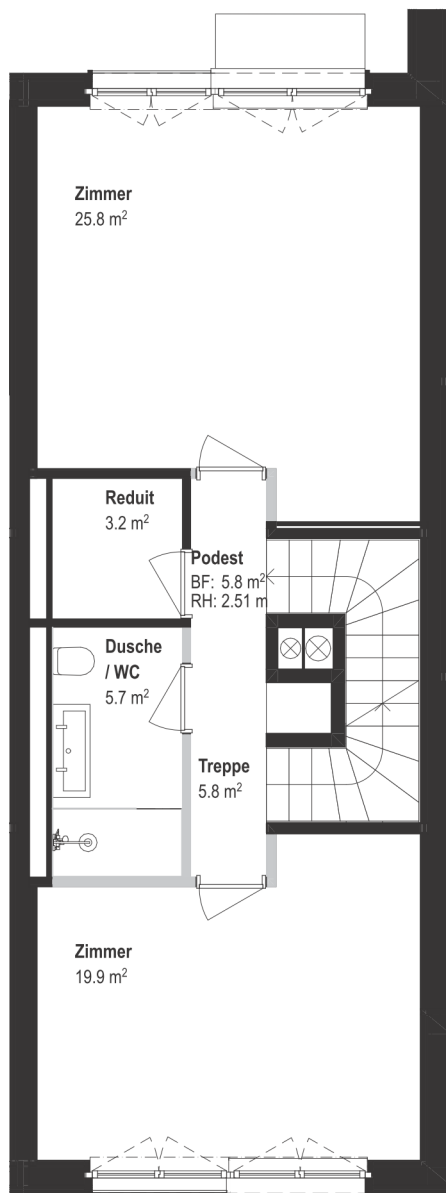


Erdgeschoss

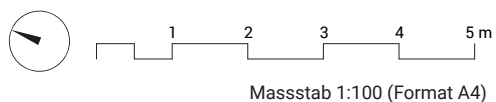
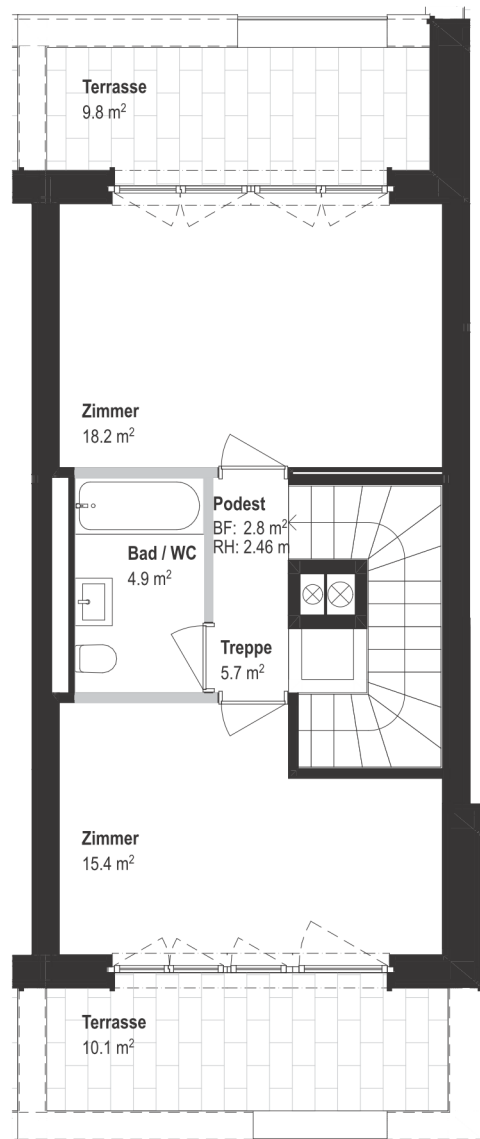


Massstab 1:100 (Format A4)

1. Obergeschoss




2. Obergeschoss



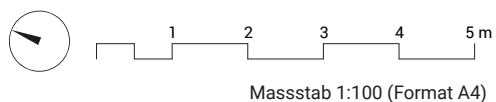
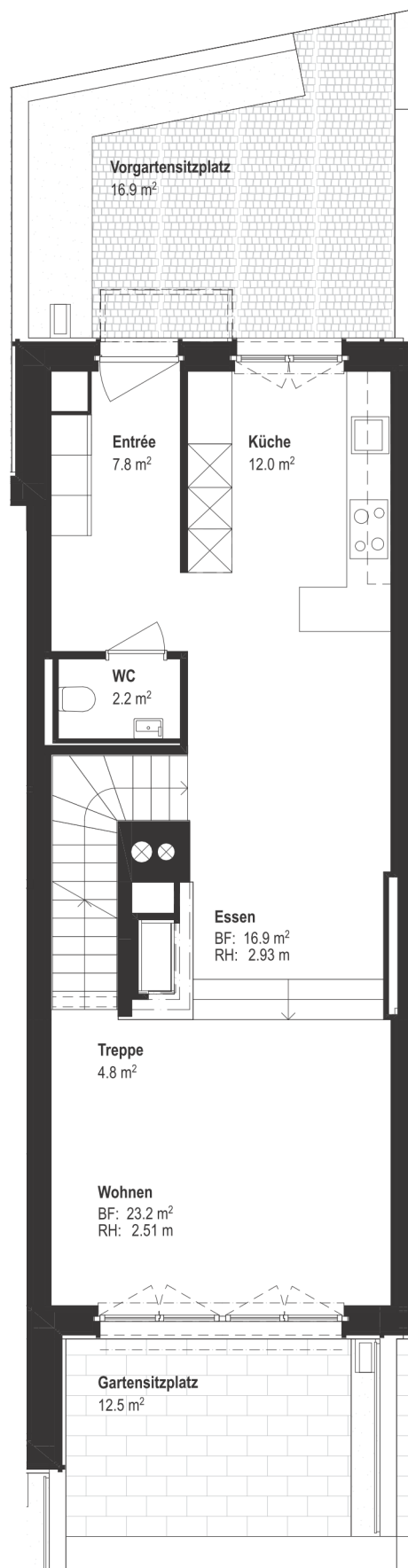
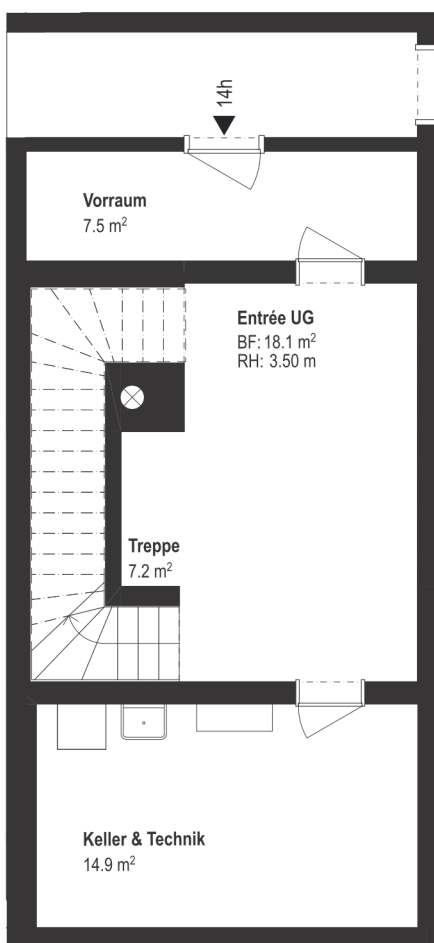
Strubenacher



| | |
|---------------------------|---|
| Reiheneinfamilienhaus 14h | 5.5 Zimmer |
| Parzellenfläche | ca. 174 m ² |
| Beheizte Wohnfläche | ca. 205 m ² |
| Oberirdische Wohnfläche | ca. 180 m ² |
| Nicht tragende Wand |  |

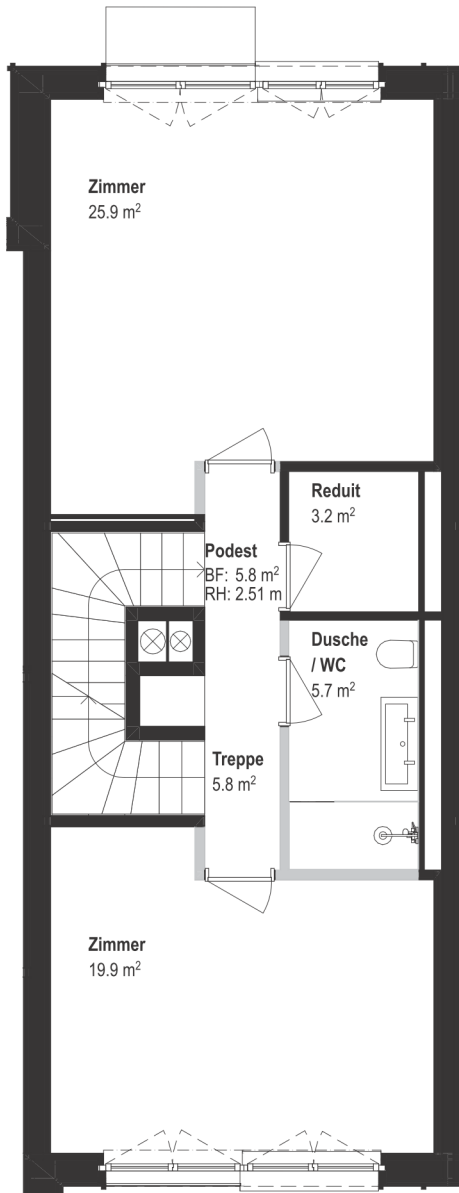
Erdgeschoss

Untergeschoss

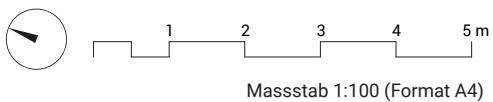
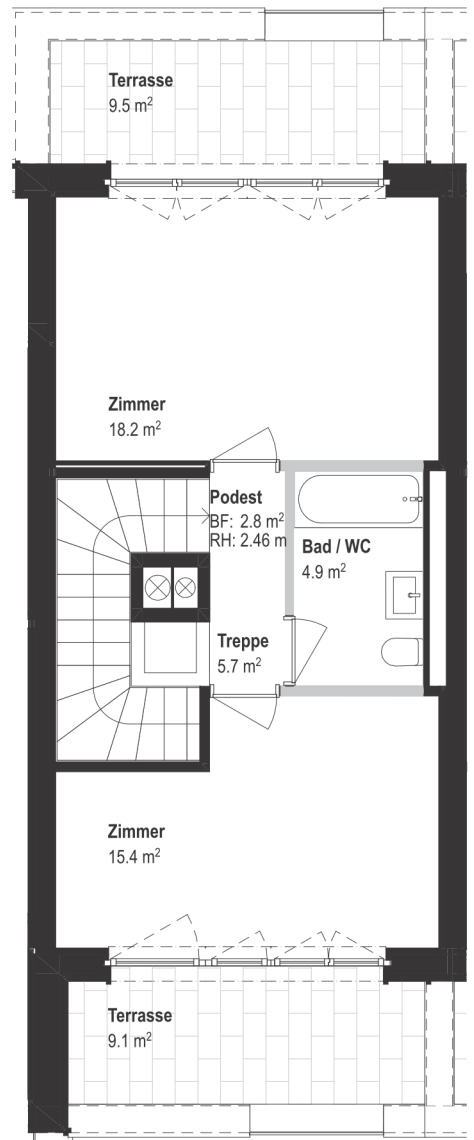


Alle Angaben, Pläne, Zeichnungen usw. sind unverbindlich.
Änderungen bleiben vorbehalten. Stand Dezember 2024

1. Obergeschoss




2. Obergeschoss

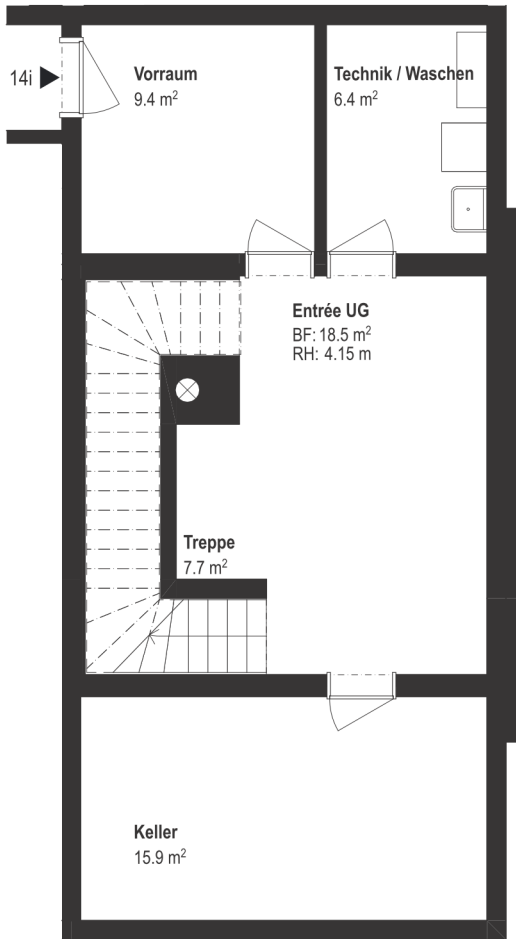


Strubenacher

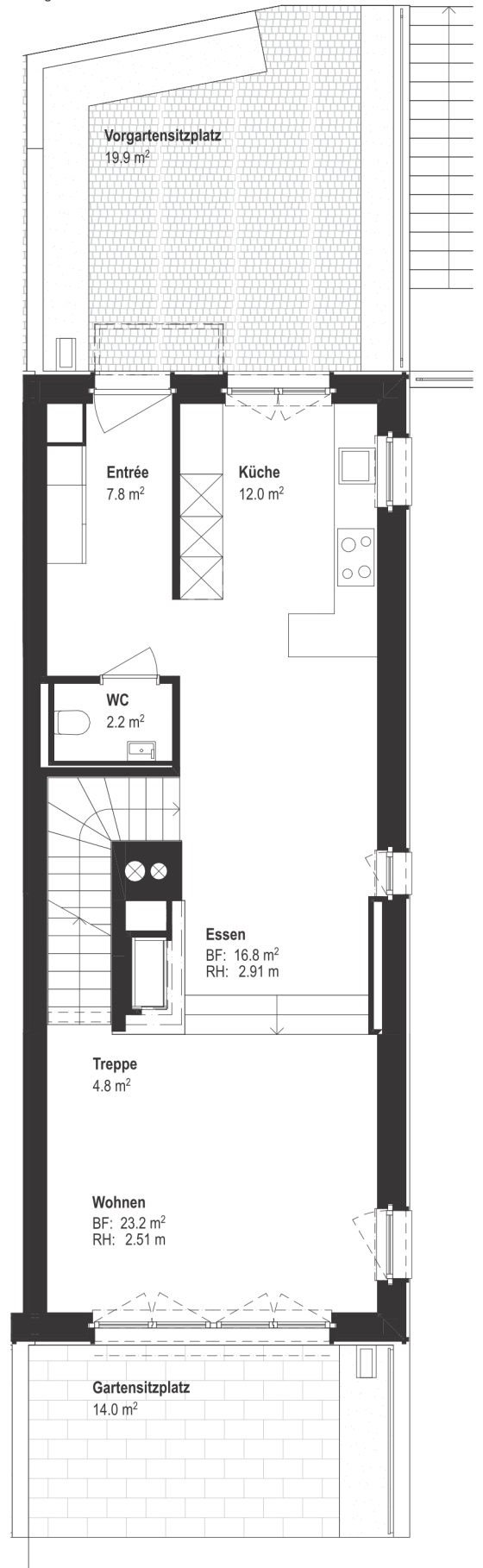


| | |
|---------------------------|---|
| Reiheneinfamilienhaus 14i | 5.5 Zimmer |
| Parzellenfläche | ca. 335 m ² |
| Beheizte Wohnfläche | ca. 206 m ² |
| Oberirdische Wohnfläche | ca. 179 m ² |
| Nicht tragende Wand |  |

Untergeschoss



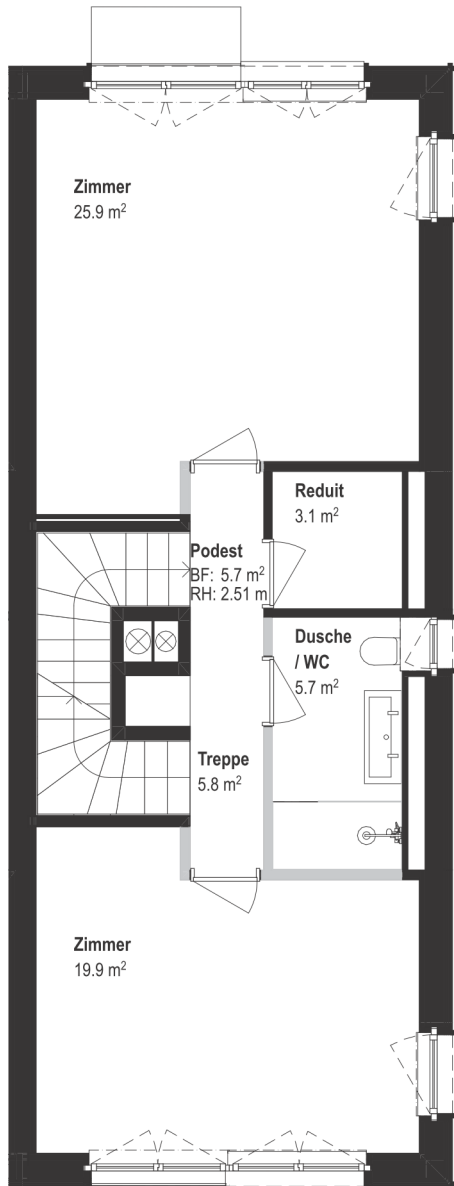
Erdgeschoss



Massstab 1:100 (Format A4)

Alle Angaben, Pläne, Zeichnungen usw. sind unverbindlich.
Änderungen bleiben vorbehalten. Stand Dezember 2024

1. Obergeschoss



2. Obergeschoss

